

# A STYLE

## ALL GLASS DOORS



AVAILABLE IN  
Dry & Wet Glazing  
Method



Patch Rails / Patch Fittings



Overhead Closer (OHC)  
& Standard Bottom pivot

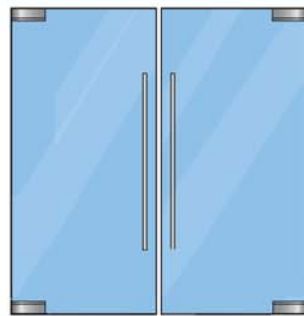


Floor Closers & Top Walking  
Beam Pivot

### CONFIGURATIONS



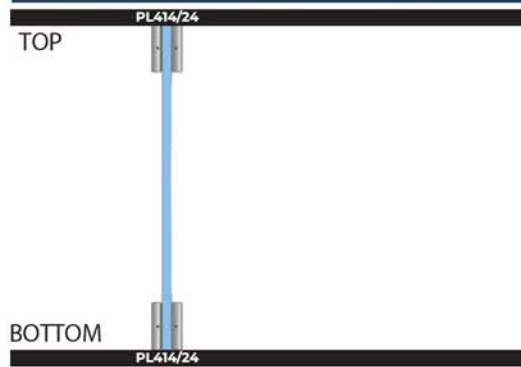
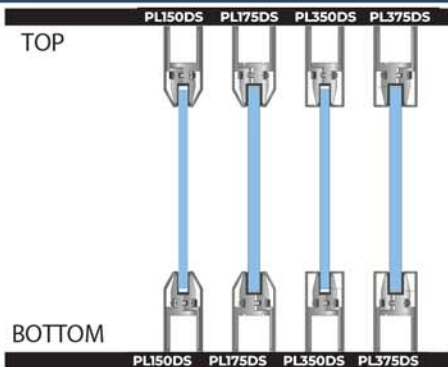
SINGLE DOOR



DOUBLE DOOR

### PATCH RAILS

### PATCH FITTINGS / RAILS

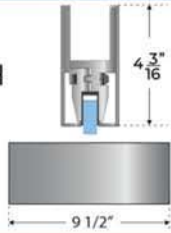


# A STYLE

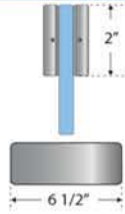
## ALL GLASS DOORS

### 1 PATCHES

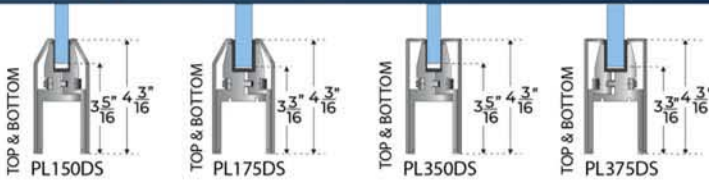
RAIL PATCH



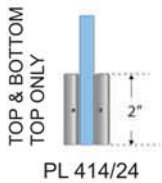
EURO PATCH FITTING



#### 1.1 PATCH RAILS



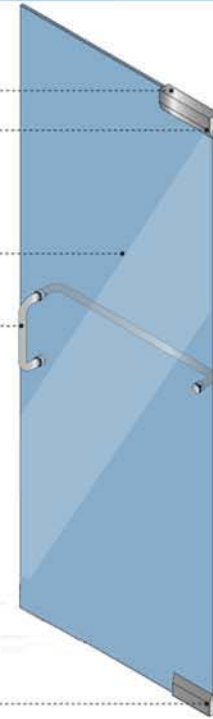
#### 1.2 PATCH FITTING



1.1  
5.1

2  
3

1.2



AVAILABLE FINISHES



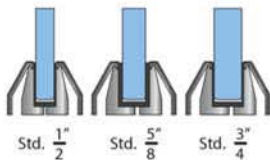
CLEAR & BRONZE ANODIZED

US10B FINISH

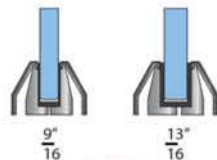
POLISHED S.S. FINISH

BRUSHED S.S. FINISH

### 2 GLASS THICKNESS | GLAZING TYPE



TEMPERED GLASS



LAMINATED GLASS

\*Consult PRL on colors available based on thickness

\*Consult PRL on colors & textures available

### 3 HANDLES



Ladder PL-LADDER



Standard C PL-3E



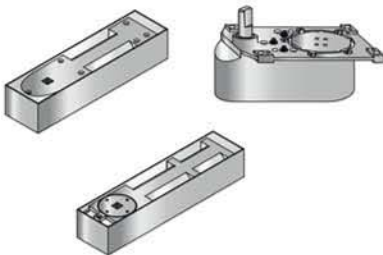
Offset PL-3EO



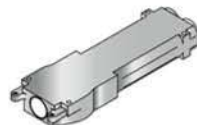
Straight & Offset PL-8E | PL-8EO

### 4 CLOSERS

FLOOR CLOSER



OVERHEAD CLOSER



\*Consult with PRL regarding which model is best suited for the door's weight