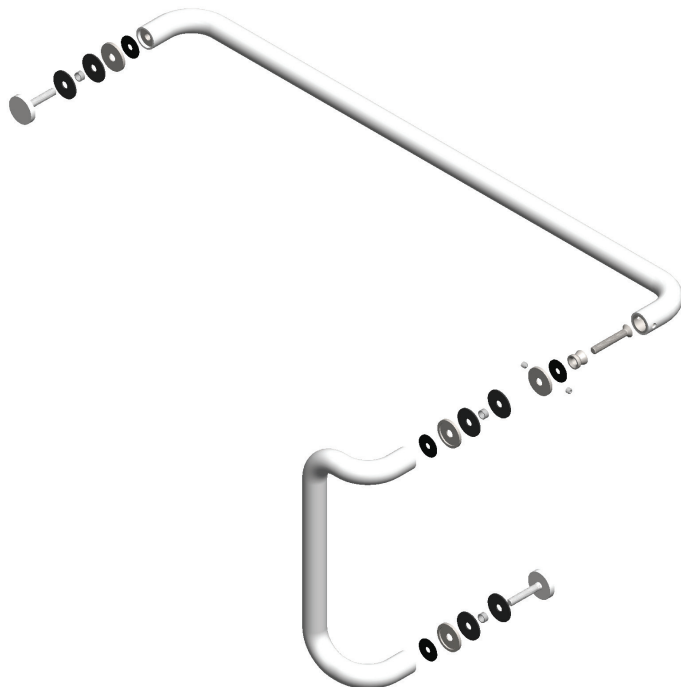
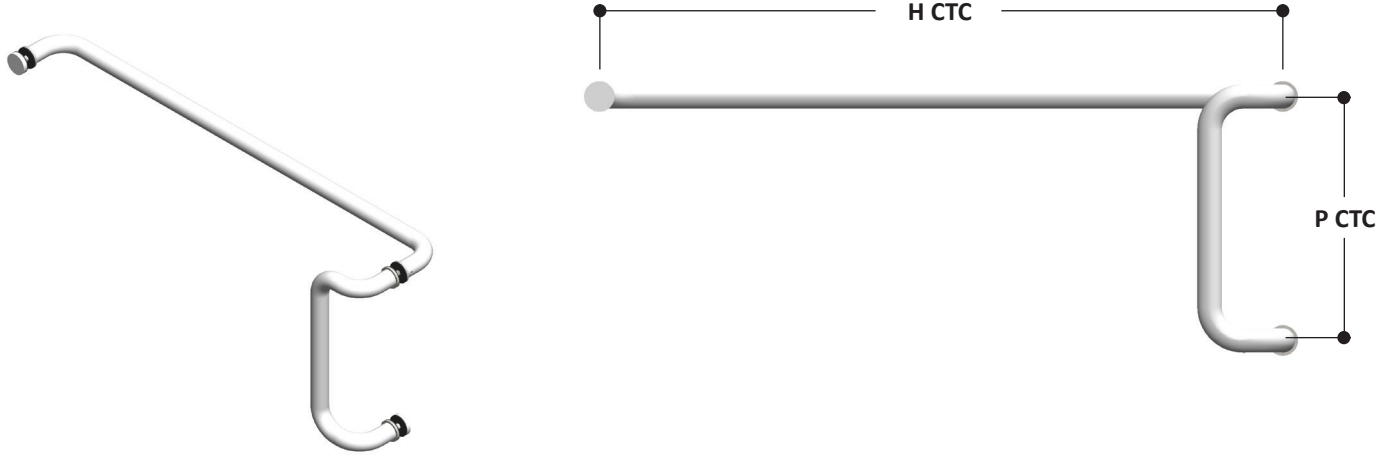




PL8EO1228 Glass Mounted Offset Pull/Push Handle



CAT. NO.	CTC P	CTC H	FINISH
PL8EO1228ANO	12"	28"	Clear Anodized
PL8EO1228BRZ	12"	28"	Dark Bronze Anodized
PL8EO1228BS	12"	28"	Brushed Stainless Steel
PL8EO1228PS	12"	28"	Polished Stainless Steel
PL8EO1228SB	12"	28"	Satin Brass
PL8EO1228PB	12"	28"	Polished Brass
Back To Back Handles			
Glass Hole Required: 5/8" Diameter			
Construction: 1" Diameter Stainless Steel or Brass Tubing			
Glass Thickness: 3/8" to 3/4"			
Bolts for 1-3/4" Aluminum Door are Special Order, Not included.			
Bolt Spec: M8x1.25			
3mm Hex Key / Allen Wrench Included			