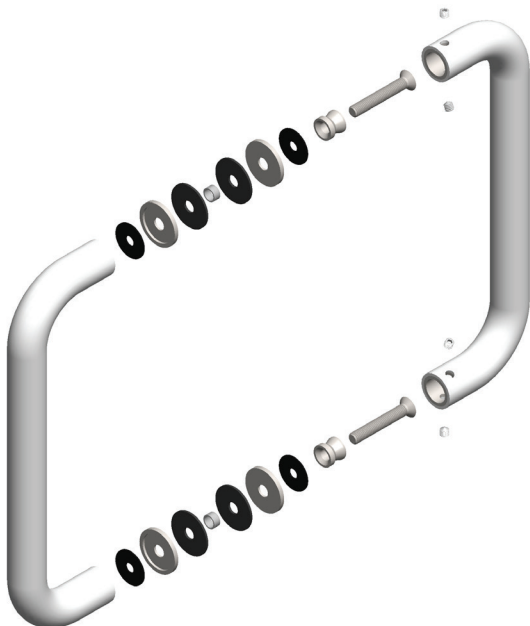
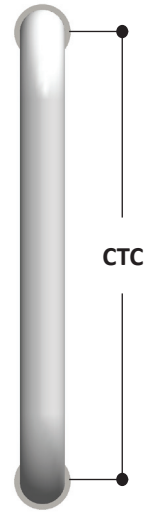
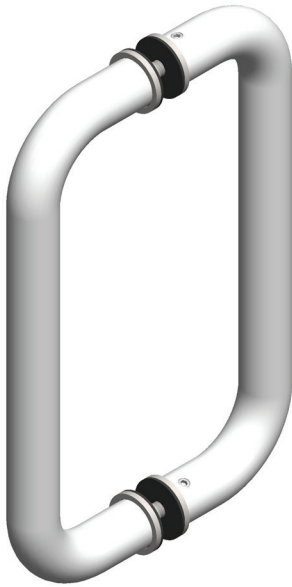




PL3E10 Glass Mounted Straight Style Handle



CAT. NO.	CTC	FINISH
PL3E10ANO	10"	Clear Anodized
PL3E10BRZ	10"	Dark Bronze Anodized
PL3E10BS	10"	Brushed Stainless Steel
PL3E10PS	10"	Polished Stainless Steel
PL3E10SB	10"	Satin Brass
PL3E10PB	10"	Polished Brass

Back To Back Handles

Glass Hole Required: 5/8" Diameter

Construction: 1" Diameter Stainless Steel or Brass Tubing

Glass Thickness: 3/8" to 3/4"

Extra Bolts Included for 1-3/4" Aluminum Door

Bolt Spec: M8x1.25

3mm Hex Key / Allen Wrench Included