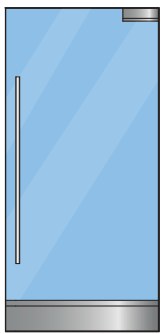


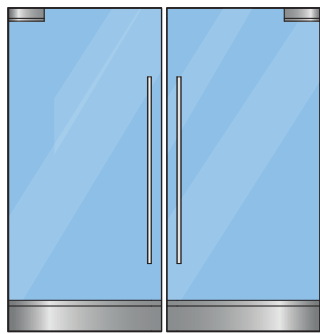
# BP-STYLE ALL GLASS DOORS



## CONFIGURATIONS

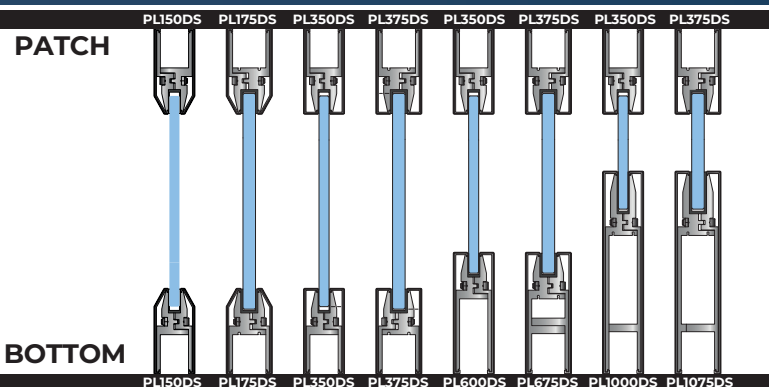


SINGLE DOOR

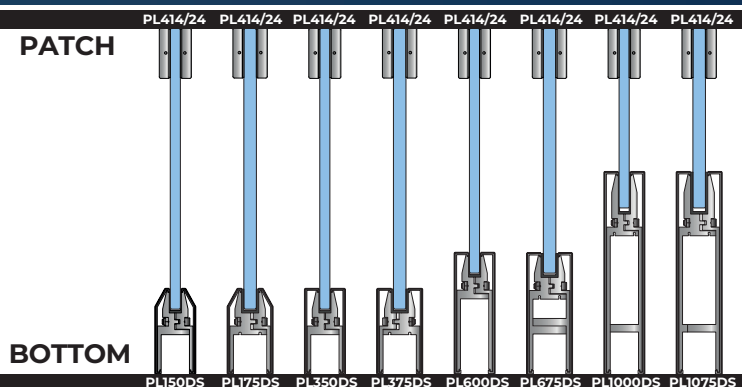


DOUBLE DOOR

## RAIL PATCH



## EURO PATCH



AVAILABLE IN  
Dry & Wet Glazing  
Method

**BP**

Top Patch With Full  
Width Bottom Rails



Overhead Closer (OHC)  
& Standard Bottom pivot.

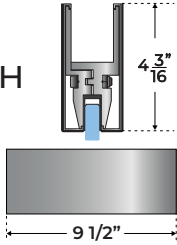


Floor Closers & Top Walking  
Beam Pivot

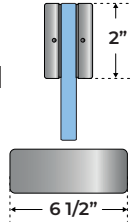
# BP-STYLE ALL GLASS DOORS

## 1 PATCH FITTING

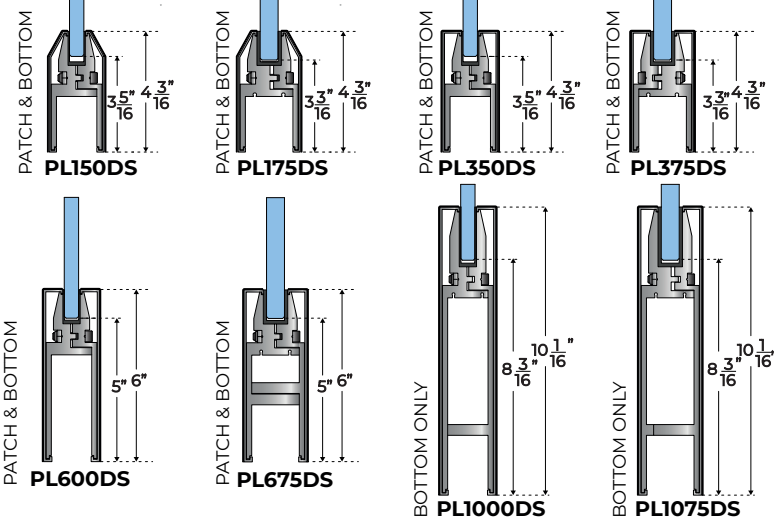
**RAIL  
PATCH**



**EURO  
PATCH**



## 1 RAILS



1.1  
5.1

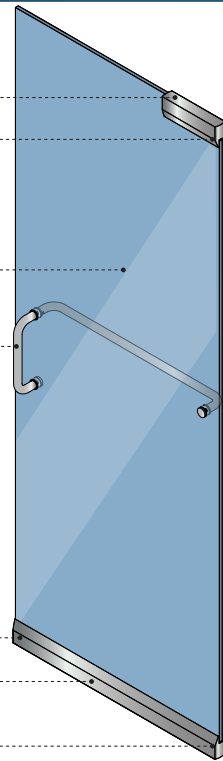
2

3

4

1.2

5.2



**AVAILABLE  
FINISHES**



**KYNAR  
PAINTED**



**BRUSHED  
BRASS**



**POLISHED  
BRASS**



**POWDER  
COAT**



**CLEAR & BRONZE  
ANODIZED**



**US10B  
FINISH**

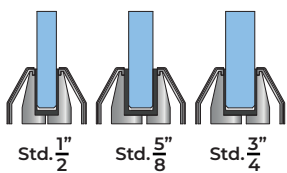


**POLISHED  
S.S. FINISH**

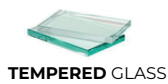


**BRUSHED  
S.S. FINISH**

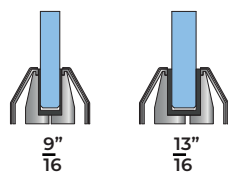
## 2 GLASS THICKNESS | GLAZING TYPE



Std.  $\frac{1}{2}$ "   Std.  $\frac{5}{8}$ "   Std.  $\frac{3}{4}$ "



**TEMPERED GLASS**



9"   13"

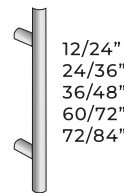


**LAMINATED GLASS**

\*Consult PRL on colors available based on thickness

\*Consult PRL on colors & textures available

## 3 HANDLES



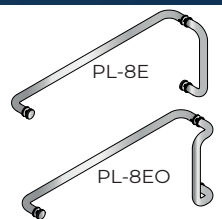
**Ladder  
PL-LADDER**



**Standard C  
PL-3E**

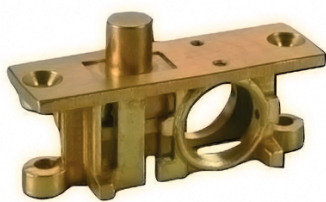


**Offset  
PL-3EO**

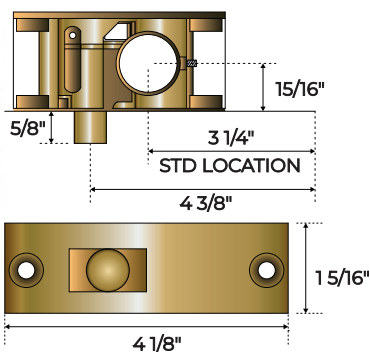


**Straight & Offset  
PL-8E | PL-8EO**

## 4 LOCK

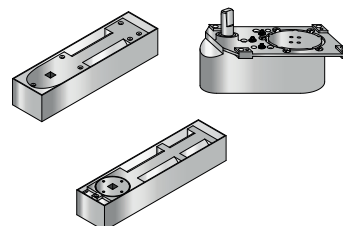


**LL01  
MORTISE LOCK**

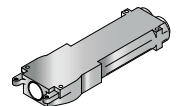


## 5 CLOSERS

**FLOOR CLOSER**



**OVERHEAD CLOSER**



\*Consult with PRL regarding which model is best suited for the door's weight