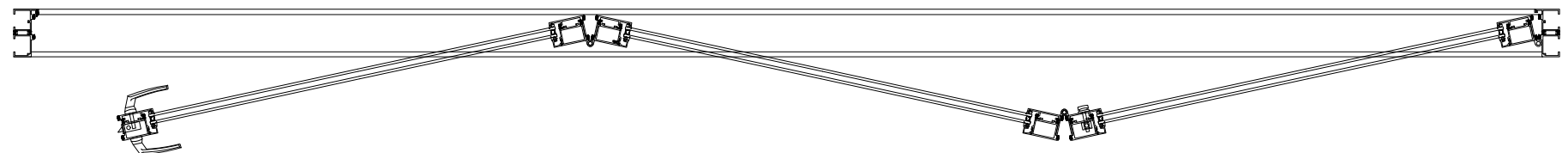
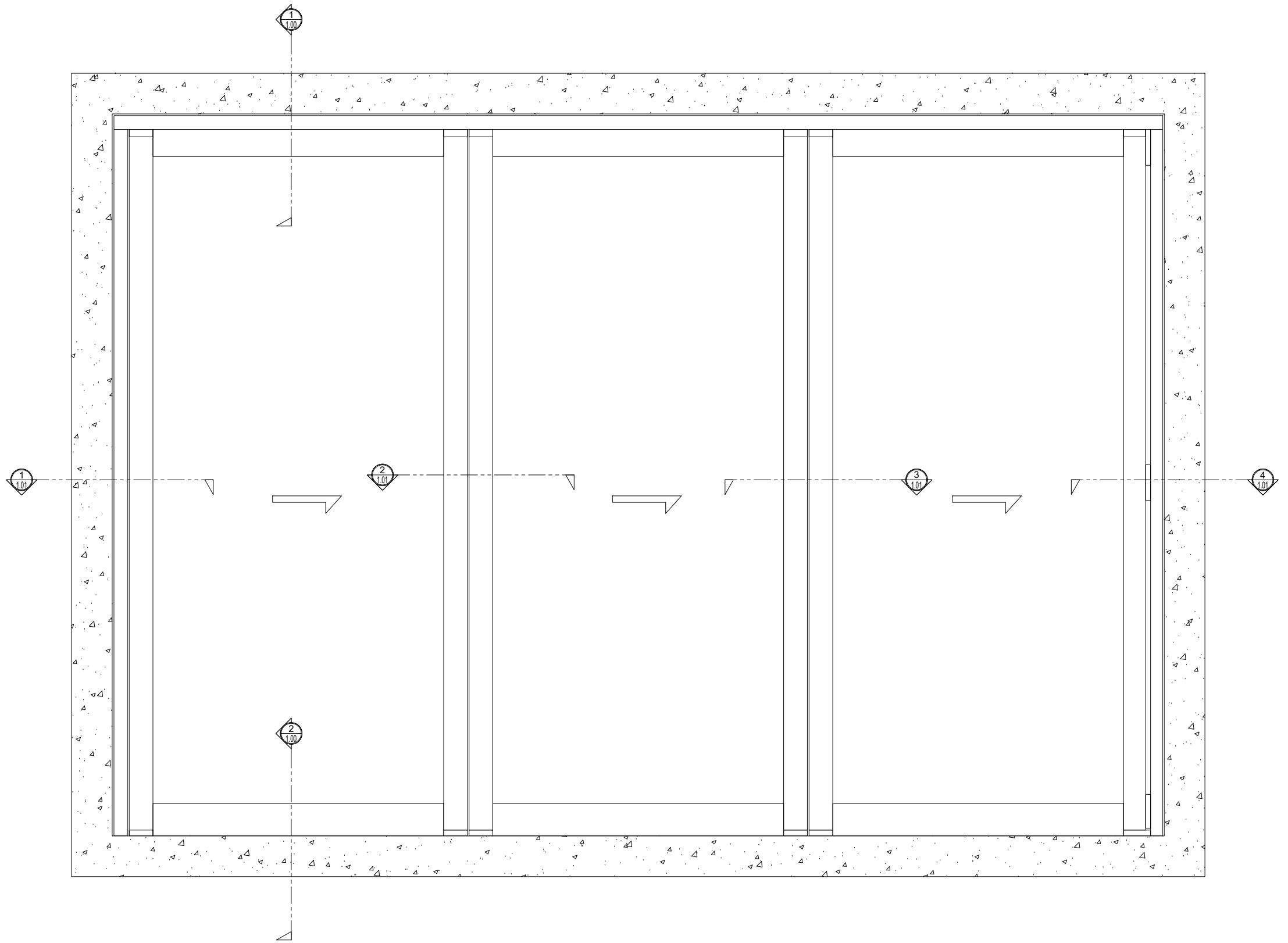
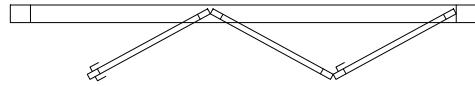


ADDRESS: 13644 NELSON AVE. CITY OF INDUSTRY, CA.  
TEL: (877) 775-2586  
FAX No.: (626) 968-95256  
WEBSITE: www.prl glass.com www.prlaluminum.com

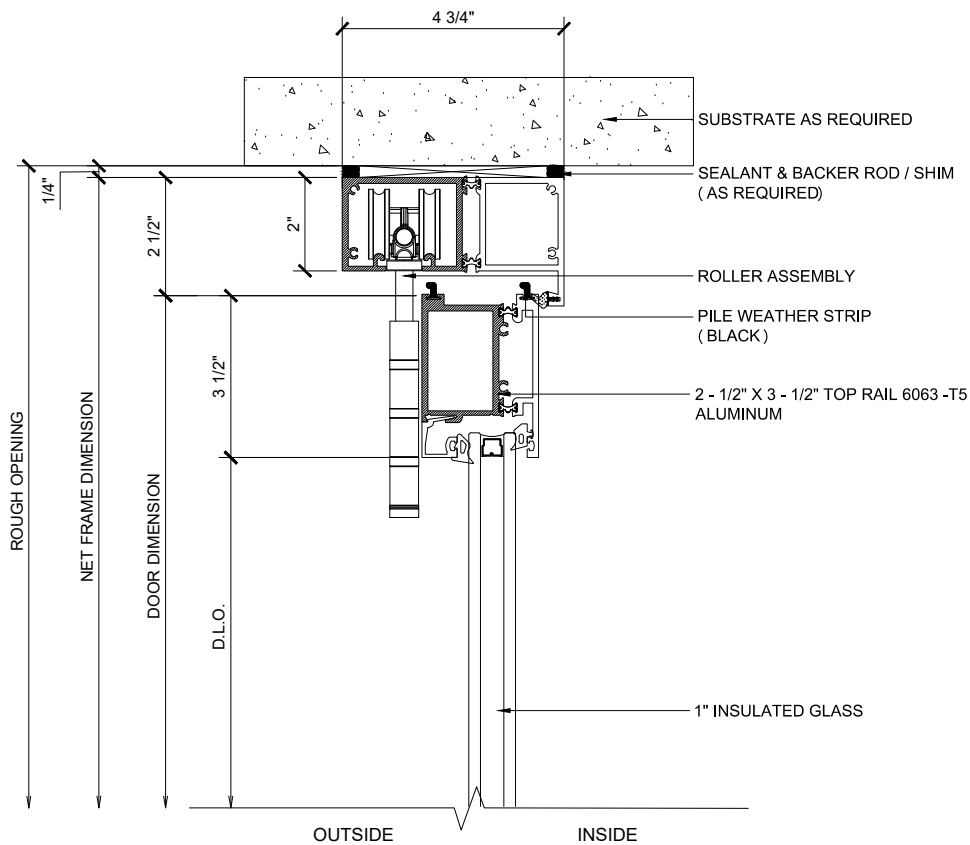
## BI - FOLD HIGH SILL

DOOR SYSTEM IN A SINGLE DIRECTION (RIGHT)  
3R PANELS - STACKING OUT  
X - DOORS



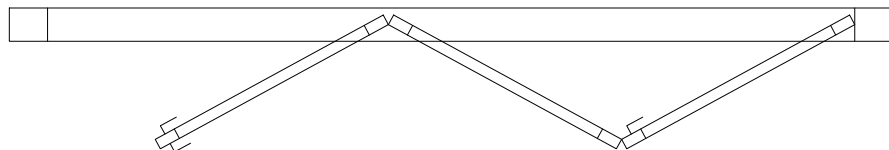
## BI - FOLD HIGH SILL

DOOR SYSTEM IN A SINGLE DIRECTION (RIGHT)  
 3R PANELS - STACKING OUT  
 X - DOORS



### ① HEAD (@DOOR)

BI-FOLD DOOR SYSTEM (XXX) SCALE: 6"=1'-0"



### A CONFIGURATION

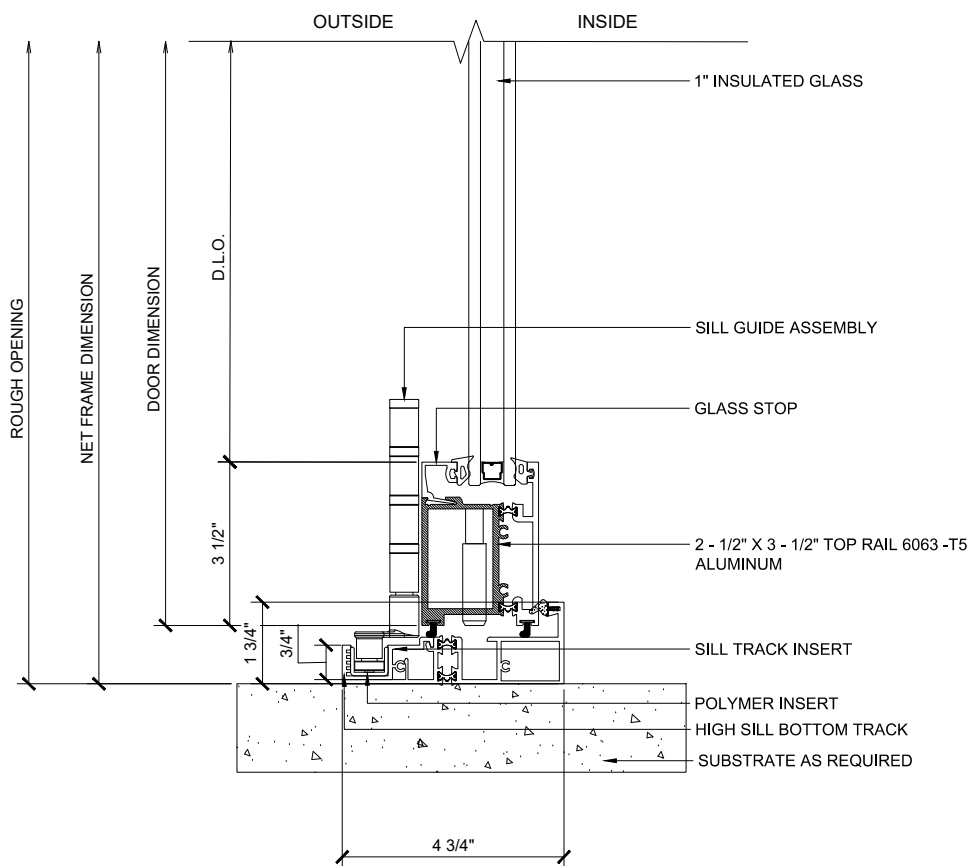
BI-FOLD DOOR SYSTEM (XXX) SCALE: 6"=1'-0"

#### Finishes:

- Clear and Bronze anodized finishes Class 1
- Standard Mill Finish available for custom colors
- Kynar

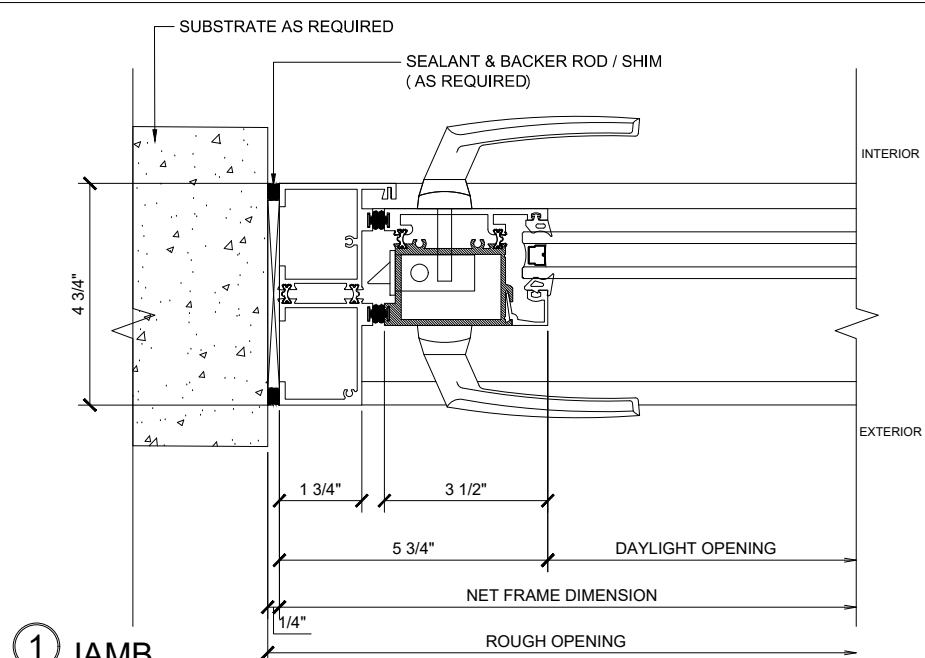
Custom finishes available

NOTE: When using maximum panel width & height 42" x 120" panel may exceed maximum panel weight of 220 lbs, consult PRL for details.



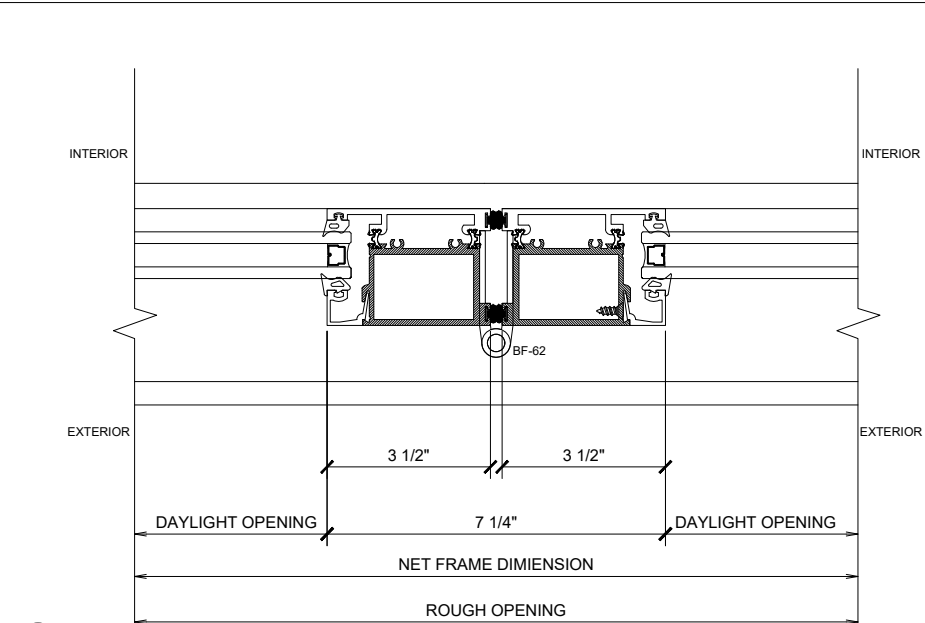
### ② HIGH SILL (@DOOR)

BI-FOLD DOOR SYSTEM (XXX) SCALE: 6"=1'-0"



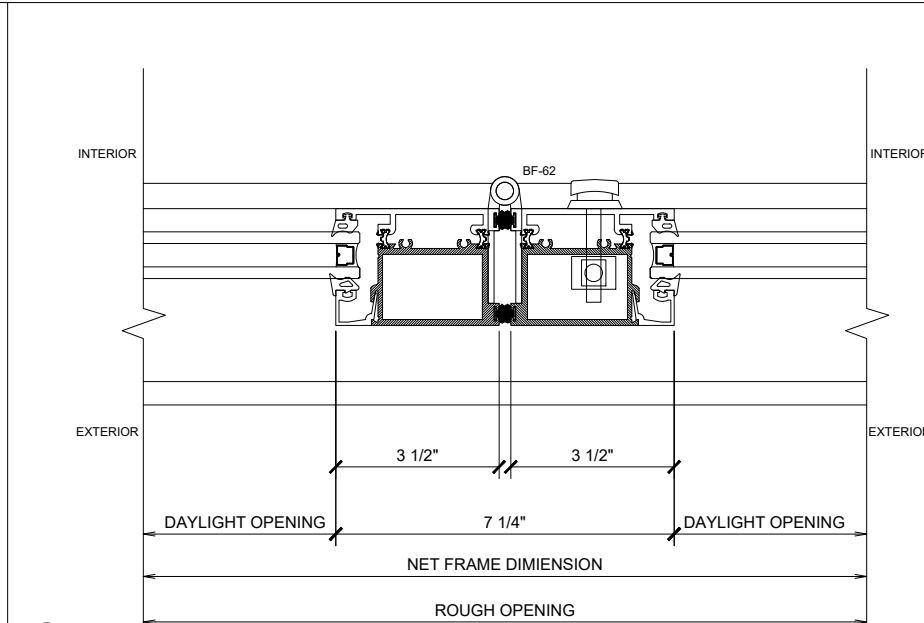
① JAMB

BI-FOLD DOOR SYSTEM (XXX) SCALE: 6"=1'-0"



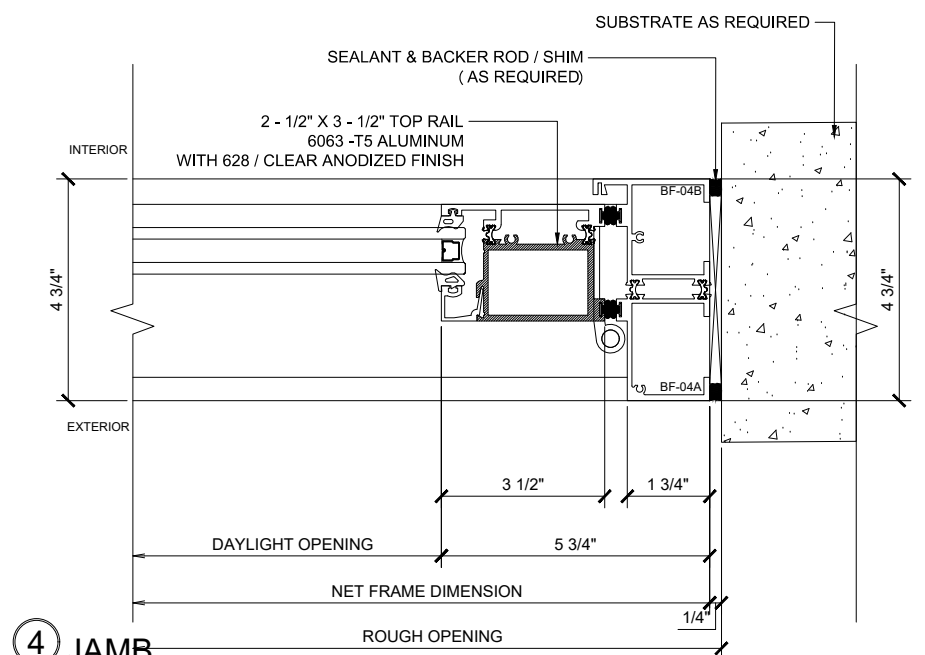
② VERTICAL

BI-FOLD DOOR SYSTEM (XXX) SCALE: 6"=1'-0"



③ VERTICAL

BI-FOLD DOOR SYSTEM (XXX) SCALE: 6"=1'-0"



④ JAMB

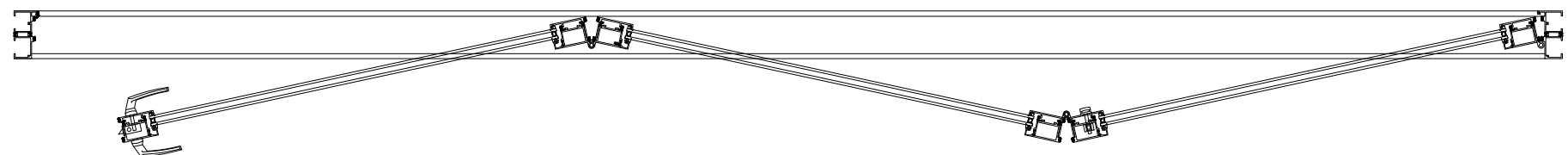
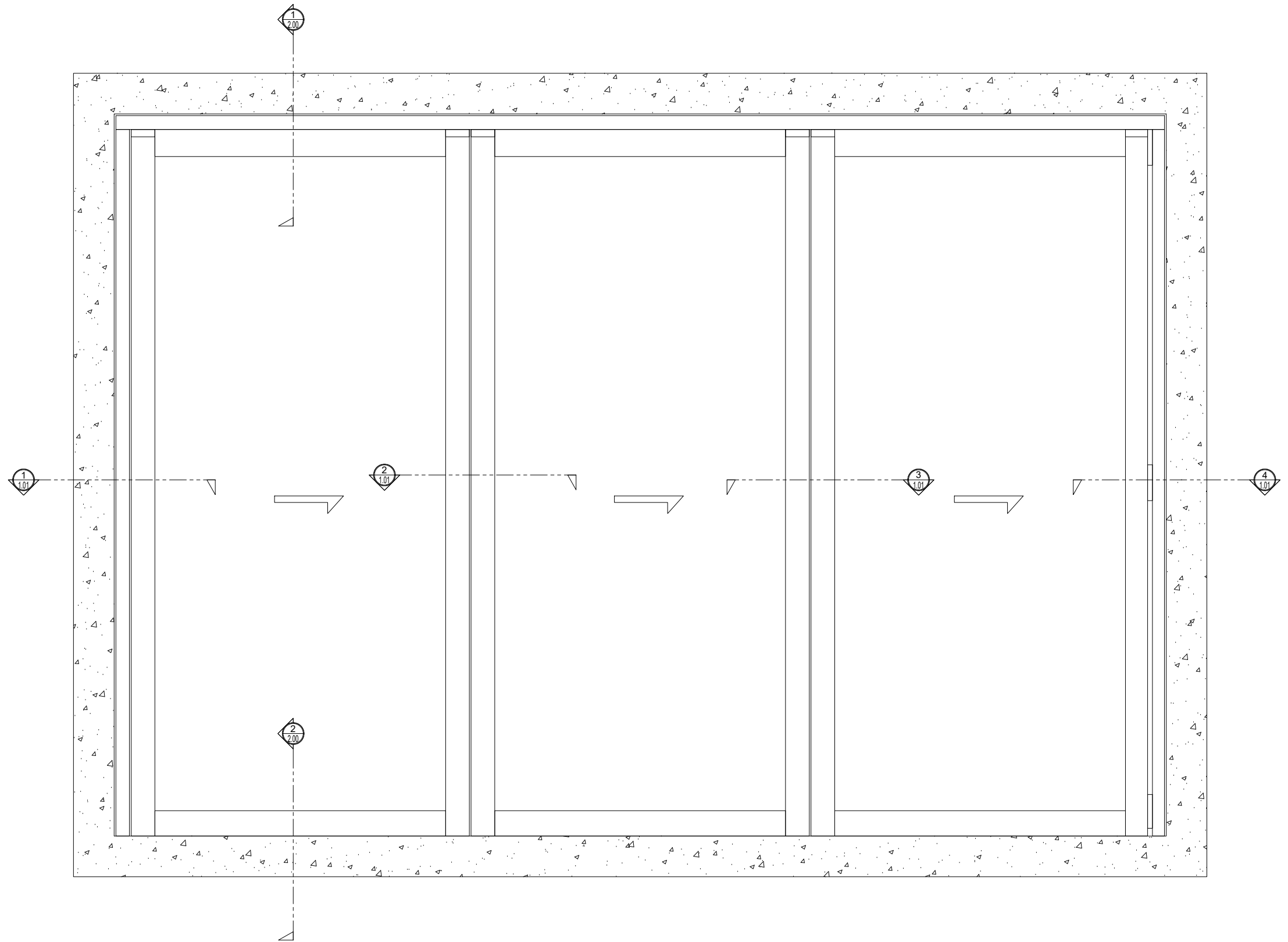
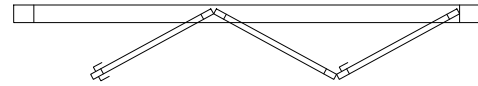
BI-FOLD DOOR SYSTEM (XXX) SCALE: 6"=1'-0"



ADDRESS: 13644 NELSON AVE. CITY OF INDUSTRY, CA.  
TEL: (877) 775-2586  
FAX No.: (626) 968-95256  
WEBSITE: www.prl-glass.com www.prlaluminum.com

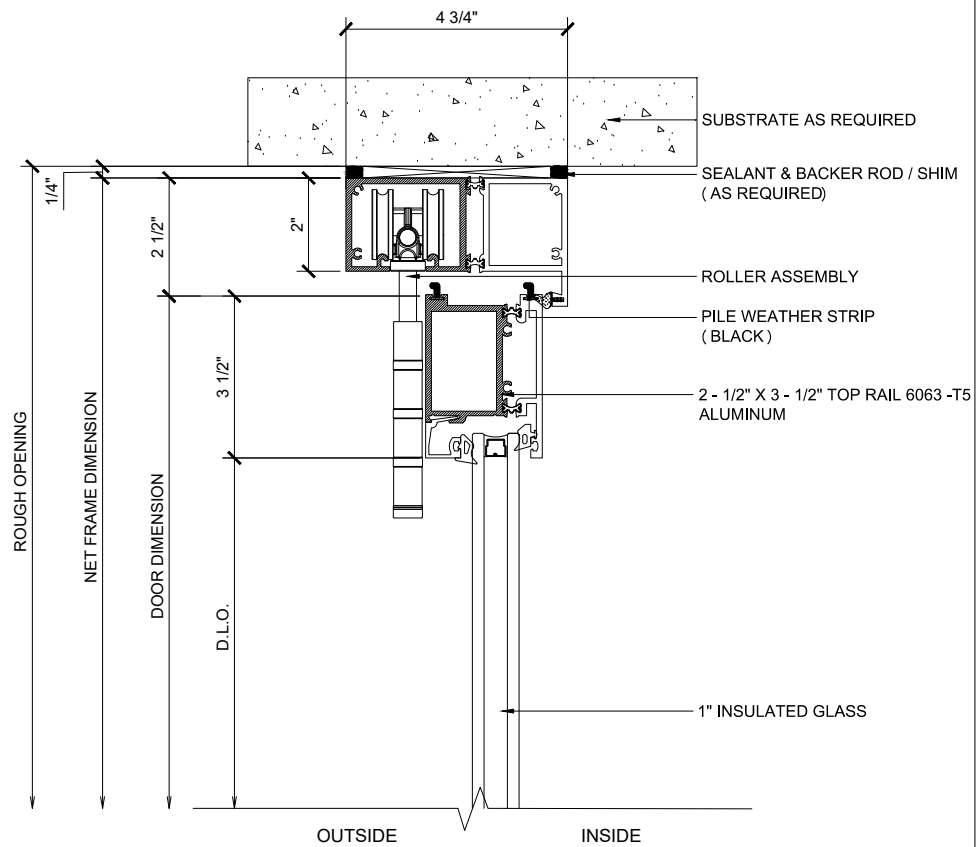
## BI - FOLD NO SILL

DOOR SYSTEM IN A SINGLE DIRECTION (RIGHT)  
3R PANELS - STACKING OUT  
X - DOORS



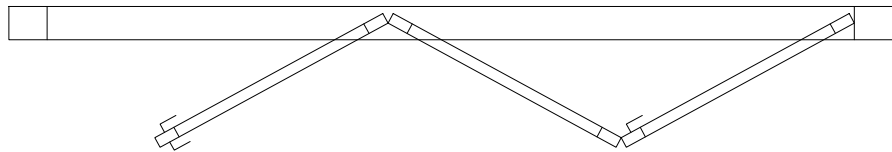
## BI - FOLD NO SILL

DOOR SYSTEM IN A SINGLE DIRECTION (RIGHT)  
 3R PANELS - STACKING OUT  
 X - DOORS



### ① HEAD (@DOOR)

BI-FOLD DOOR SYSTEM (XXX) SCALE: 6"=1'-0"



### Ⓐ CONFIGURATION

BI-FOLD DOOR SYSTEM (XXX) SCALE: 6"=1'-0"

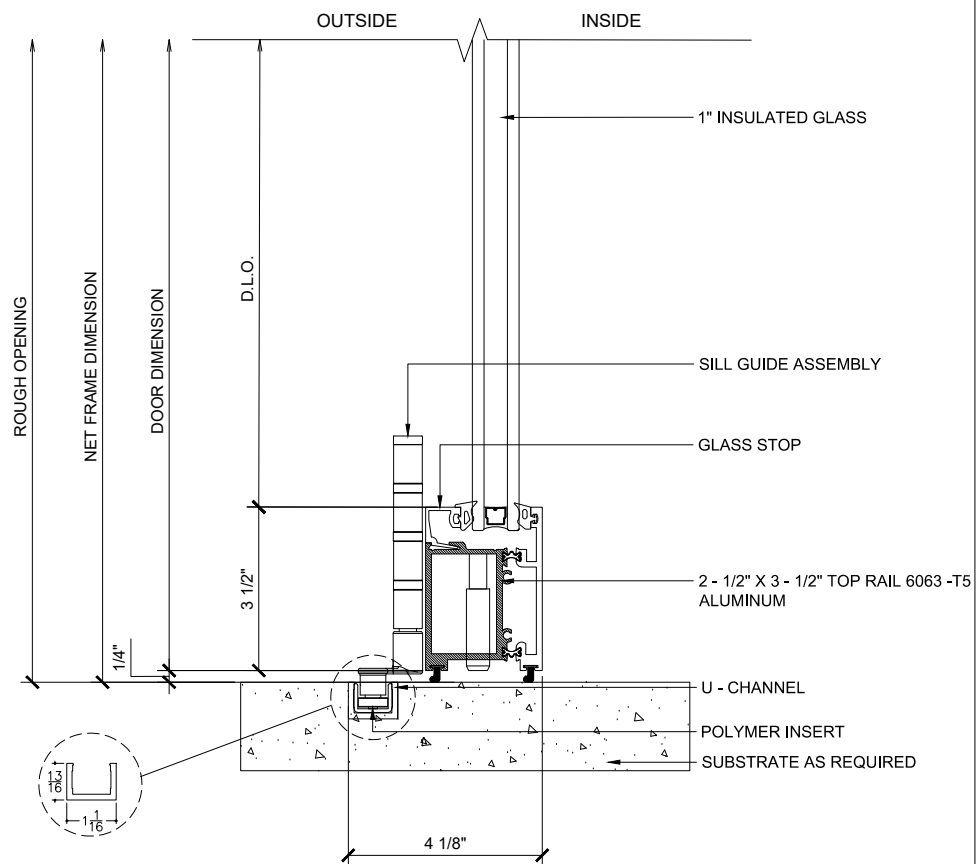
#### Finishes:

- Clear and Bronze anodized finishes Class 1
- Standard Mill Finish available for custom colors
- Kynar

Custom finishes available

NOTE: When using maximum panel width & height 42" x 120" panel may exceed maximum panel weight of 220 lbs, consult PRL for details.

NO WATERPROOF



### ② NO SILL (@DOOR)

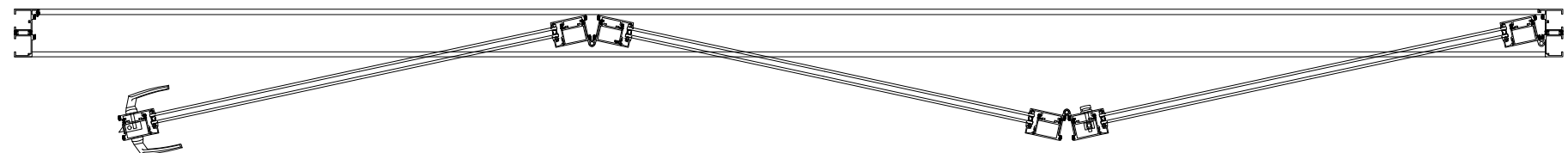
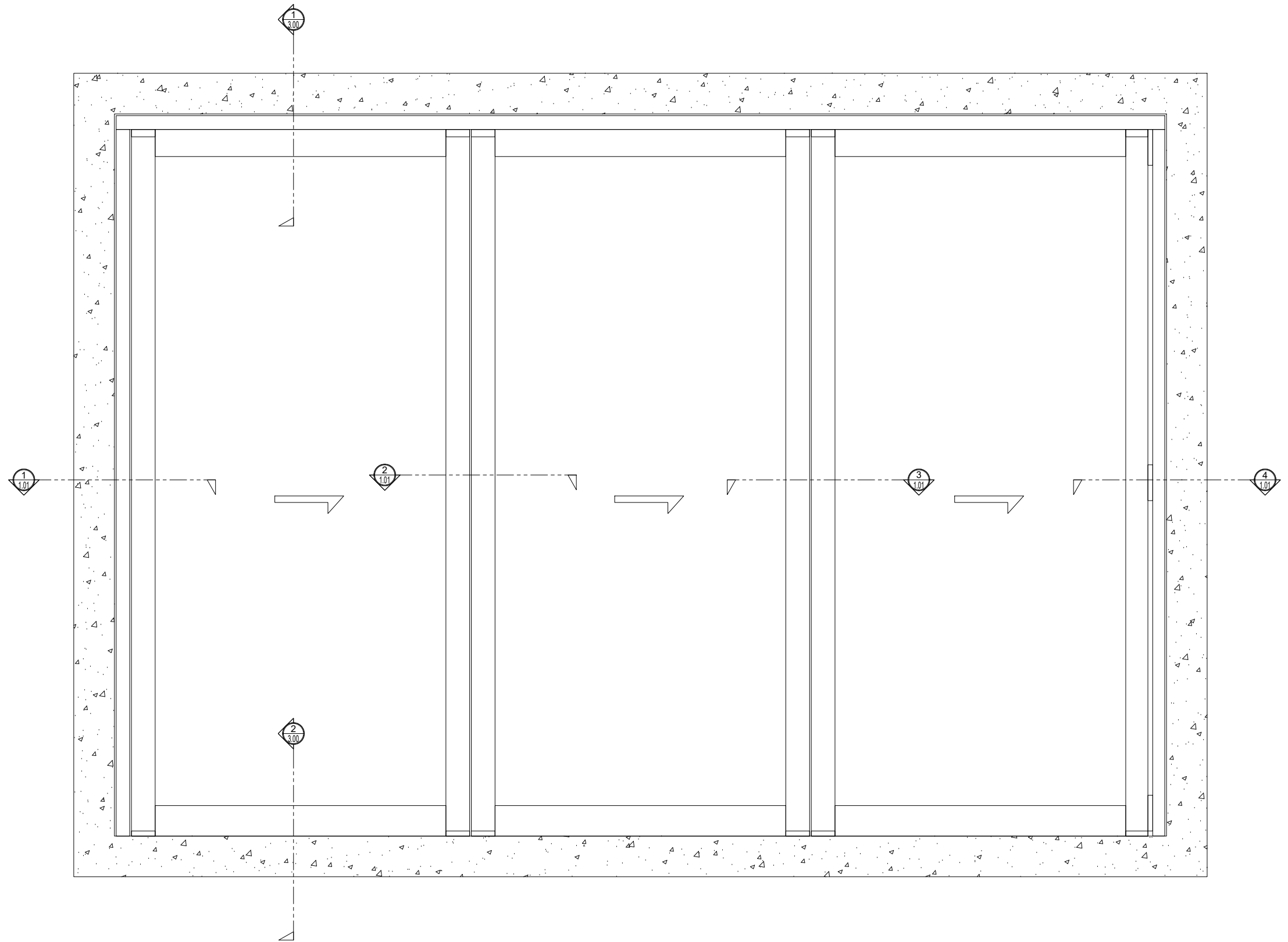
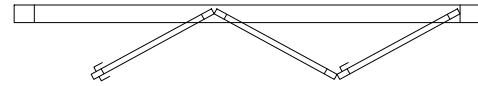
BI-FOLD DOOR SYSTEM (XXX) SCALE: 6"=1'-0"



ADDRESS: 13644 NELSON AVE. CITY OF INDUSTRY, CA.  
TEL: (877) 775-2586  
FAX No.: (626) 968-95256  
WEBSITE: www.prl-glass.com www.prlaluminum.com

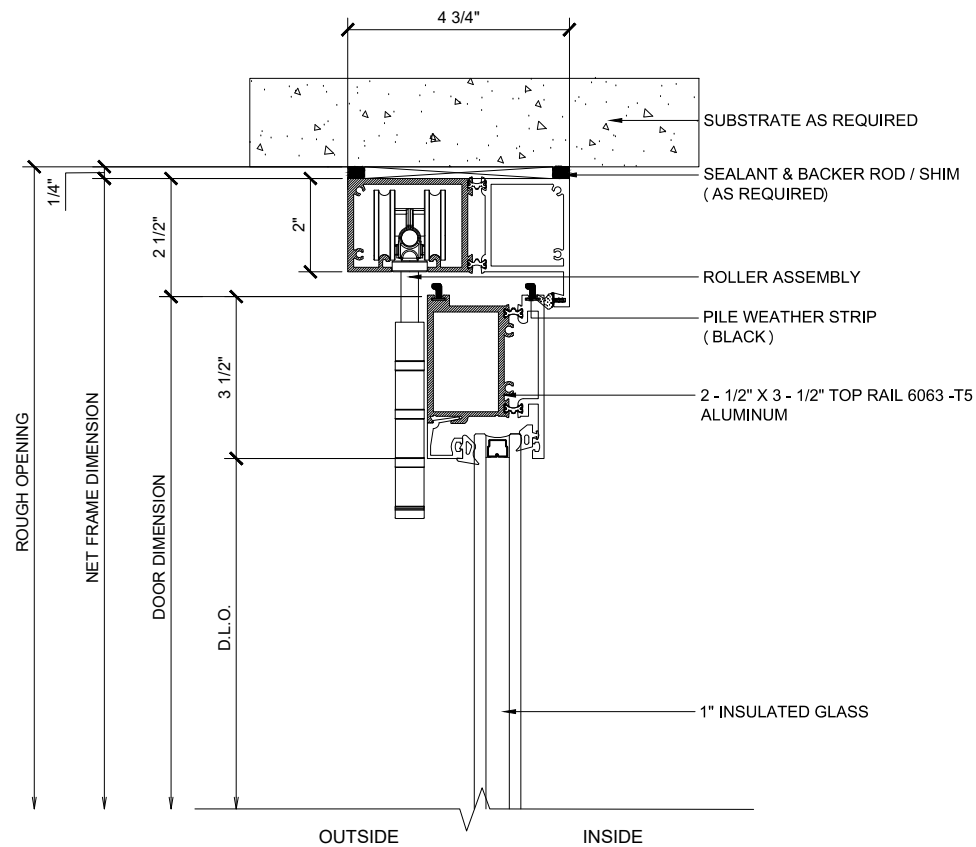
## BI - FOLD LOW SILL

DOOR SYSTEM IN A SINGLE DIRECTION (RIGHT)  
3R PANELS - STACKING OUT  
X - DOORS



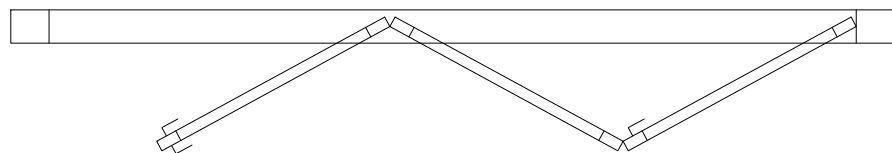
## BI - FOLD LOW SILL

DOOR SYSTEM IN A SINGLE DIRECTION (RIGHT)  
 3R PANELS - STACKING OUT  
 X - DOORS



### ① HEAD (@DOOR)

BI-FOLD DOOR SYSTEM (XXX) SCALE: 6"=1'-0"



### Ⓐ CONFIGURATION

BI-FOLD DOOR SYSTEM (XXX) SCALE: 6"=1'-0"

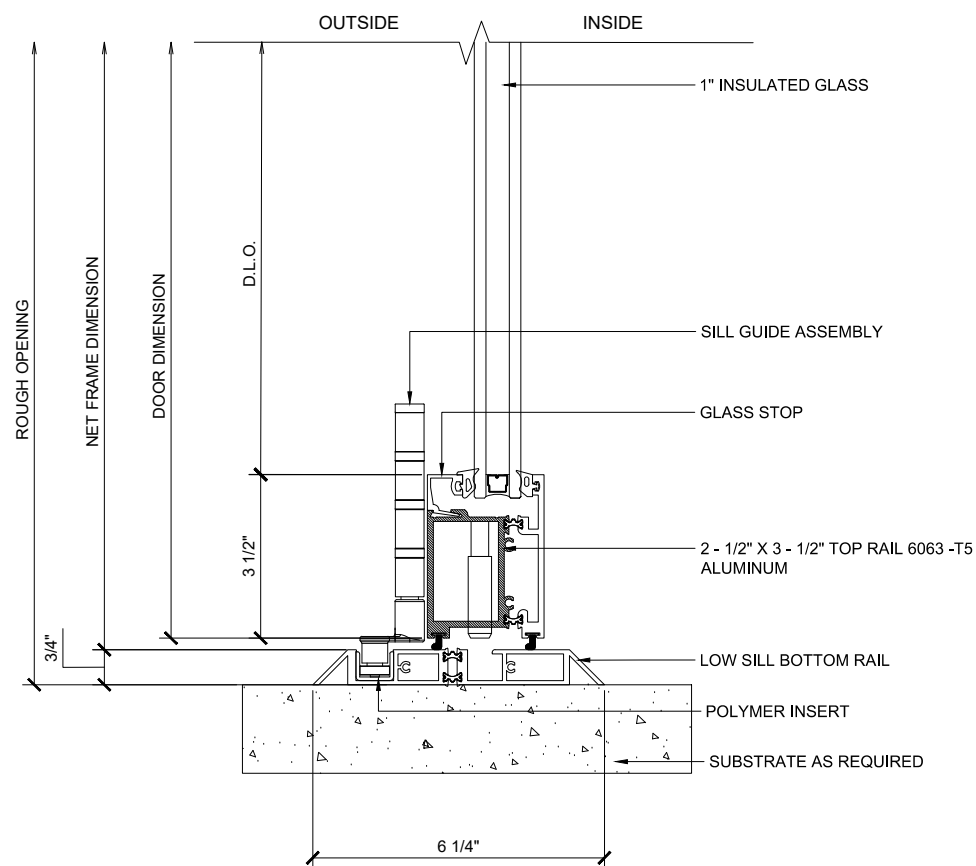
#### Finishes:

- Clear and Bronze anodized finishes Class 1
- Standard Mill Finish available for custom colors
- Kynar

Custom finishes available

NOTE: When using maximum panel width & height 42" x 120" panel may exceed maximum panel weight of 220 lbs, consult PRL for details.

NO WATERPROOF



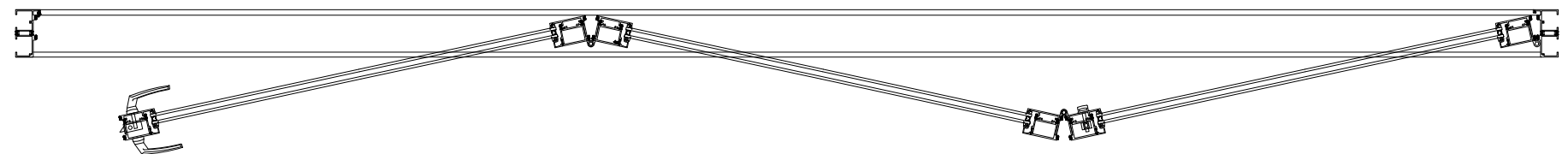
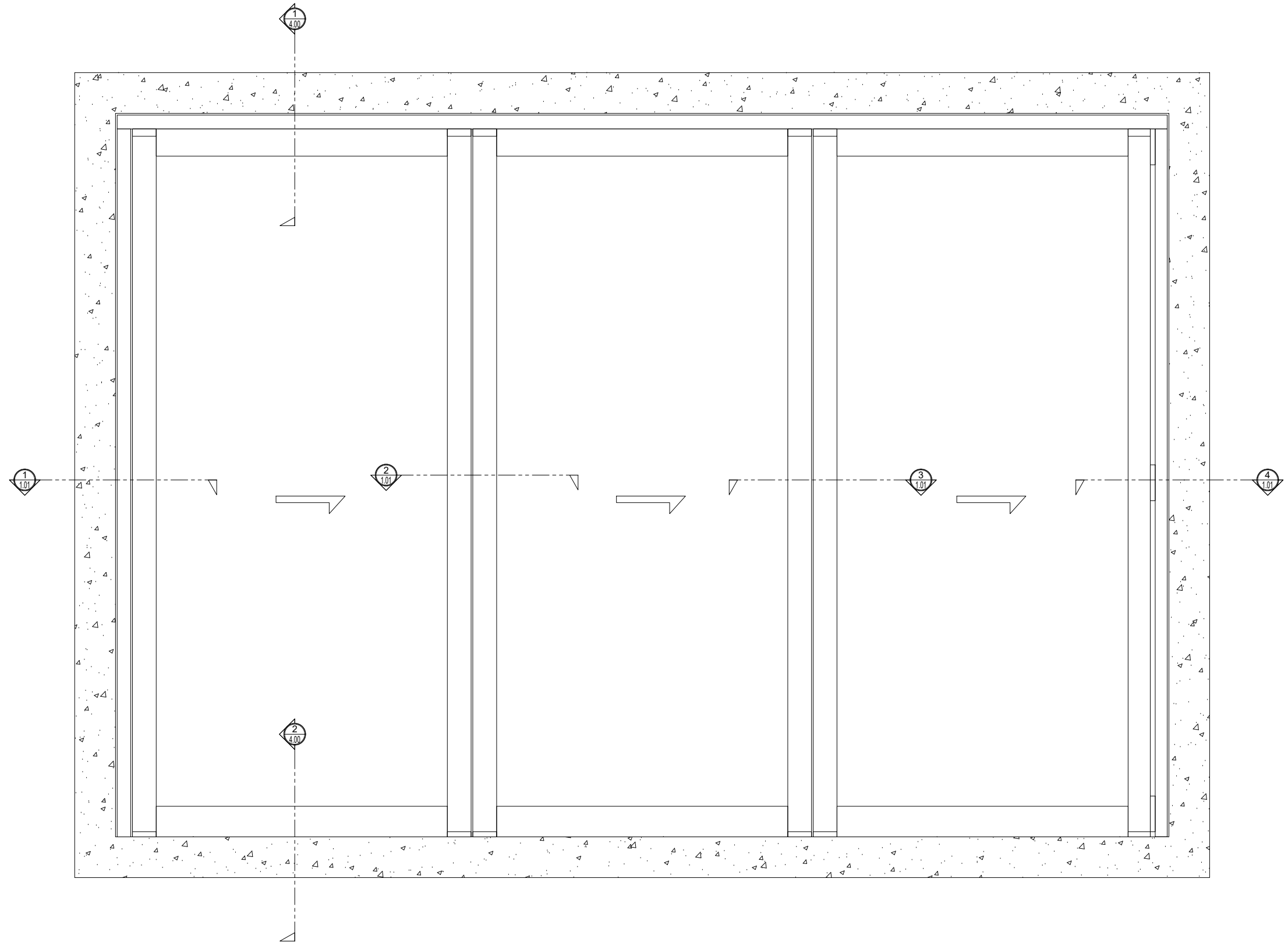
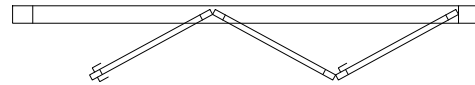
### ② LOW SILL (@DOOR)

BI-FOLD DOOR SYSTEM (XXX) SCALE: 6"=1'-0"

**BI - FOLD**

**ADA SILL**

DOOR SYSTEM IN A SINGLE DIRECTION (RIGHT)  
 3R PANELS - STACKING OUT  
 X - DOORS

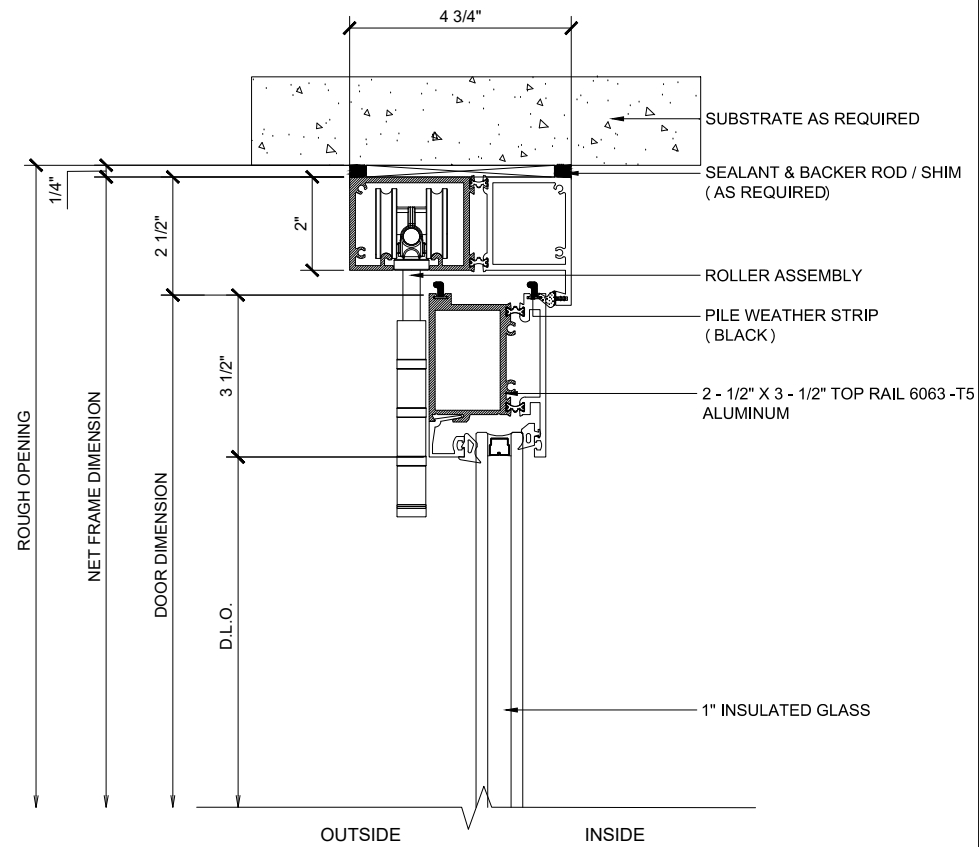




## BI - FOLD

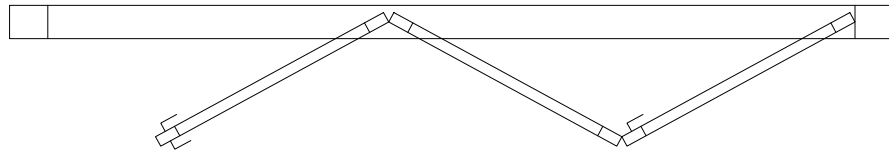
### ADA SILL

DOOR SYSTEM IN A SINGLE DIRECTION (RIGHT)  
 3R PANELS - STACKING OUT  
 X - DOORS



## ① HEAD (@DOOR)

BI-FOLD DOOR SYSTEM (XXX) SCALE: 6"=1'-0"



## Ⓐ CONFIGURATION

BI-FOLD DOOR SYSTEM (XXX) SCALE: 6"=1'-0"

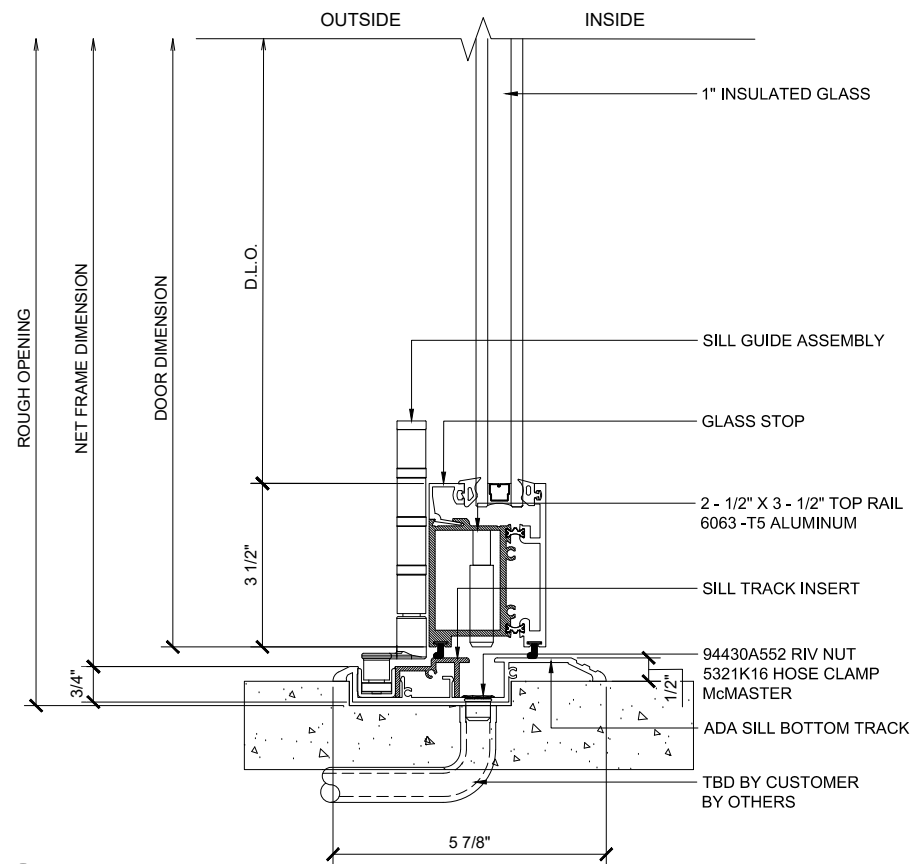
### Finishes:

- Clear and Bronze anodized finishes Class 1
- Standard Mill Finish available for custom colors
- Kynar

Custom finishes available

NOTE: When using maximum panel width & height 42" x 120" panel may exceed maximum panel weight of 220 lbs, consult PRL for details.

NO WATERPROOF



## ② ADA SILL (@DOOR)

BI-FOLD DOOR SYSTEM (XXX) SCALE: 6"=1'-0"