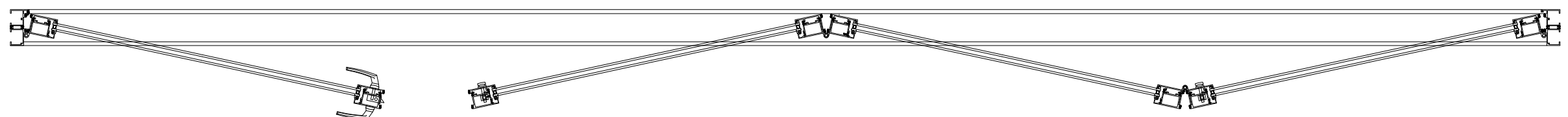
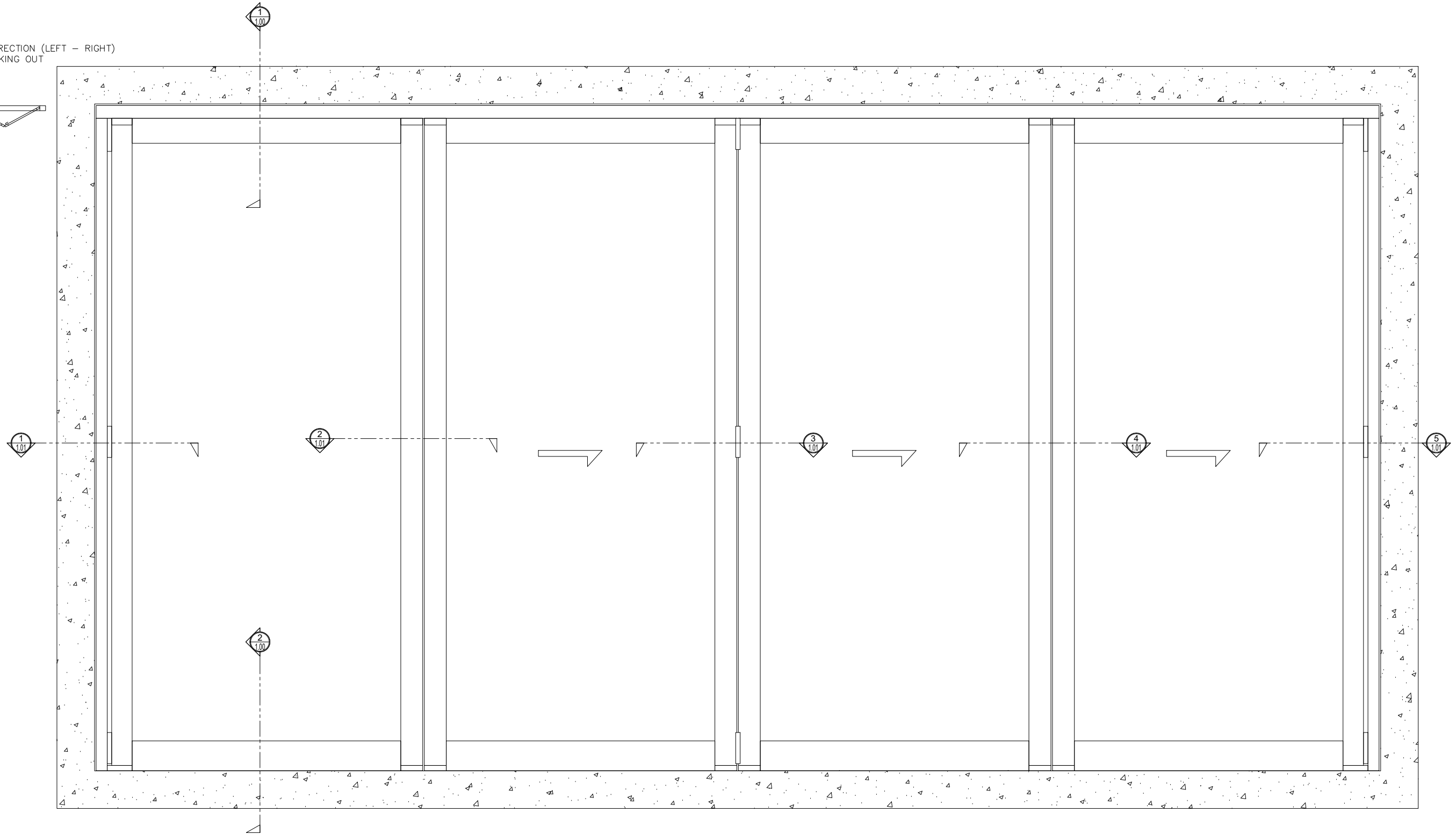
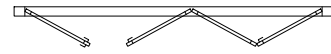


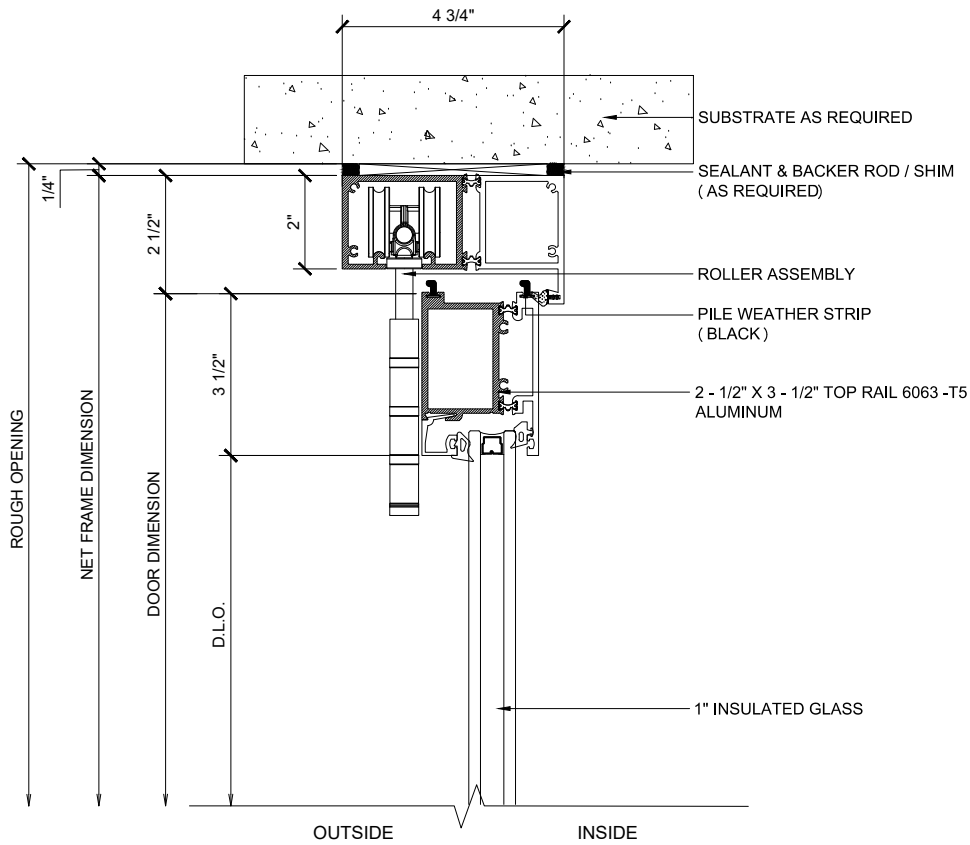
BI - FOLD HIGH SILL

DOOR SYSTEM IN A BI-DIRECTION (LEFT - RIGHT)
1L-3R PANELS - STACKING OUT
X - DOORS



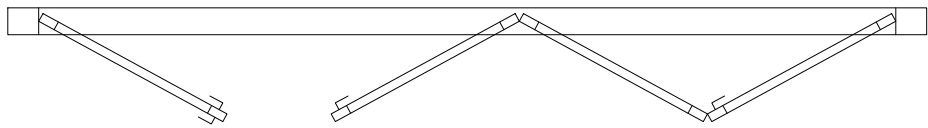
BI - FOLD HIGH SILL

DOOR SYSTEM IN A BI-DIRECTION (LEFT - RIGHT)
 3L-1R PANELS - STACKING OUT
 X - DOORS



① HEAD (@DOOR)

BI-FOLD DOOR SYSTEM (X-XXX) SCALE: 6"=1'-0"



A CONFIGURATION

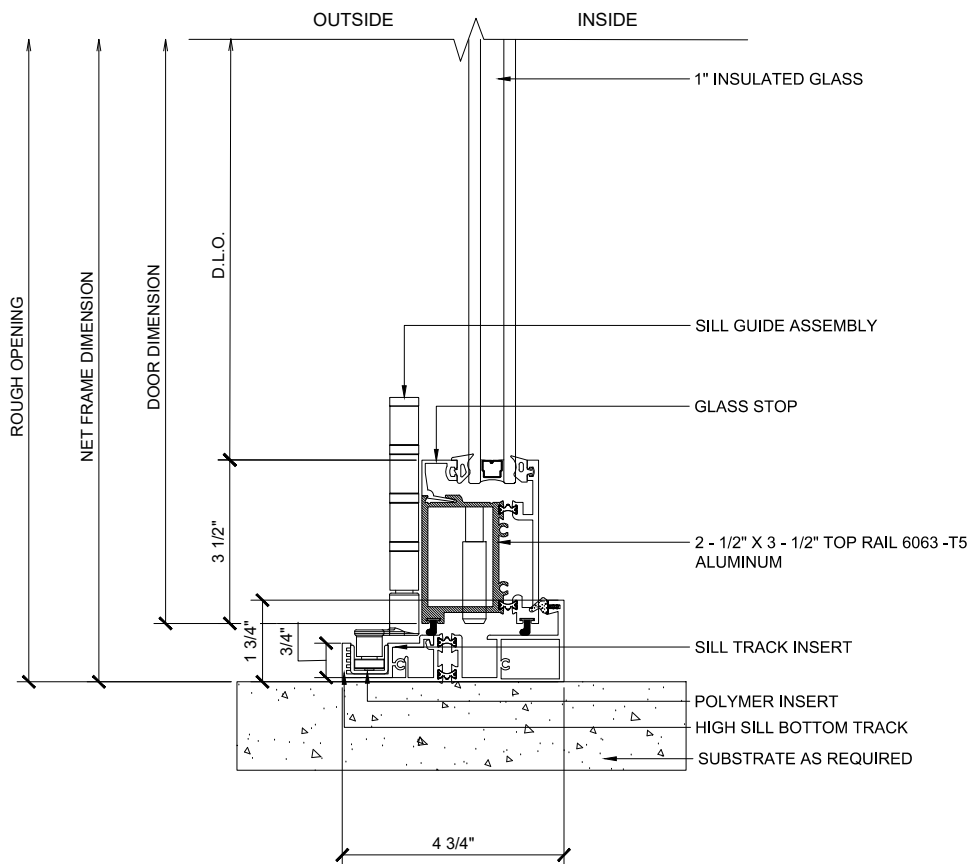
BI-FOLD DOOR SYSTEM (X-XXX) SCALE: 6"=1'-0"

Finishes:

- Clear and Bronze anodized finishes Class 1
- Standard Mill Finish available for custom colors
- Kynar

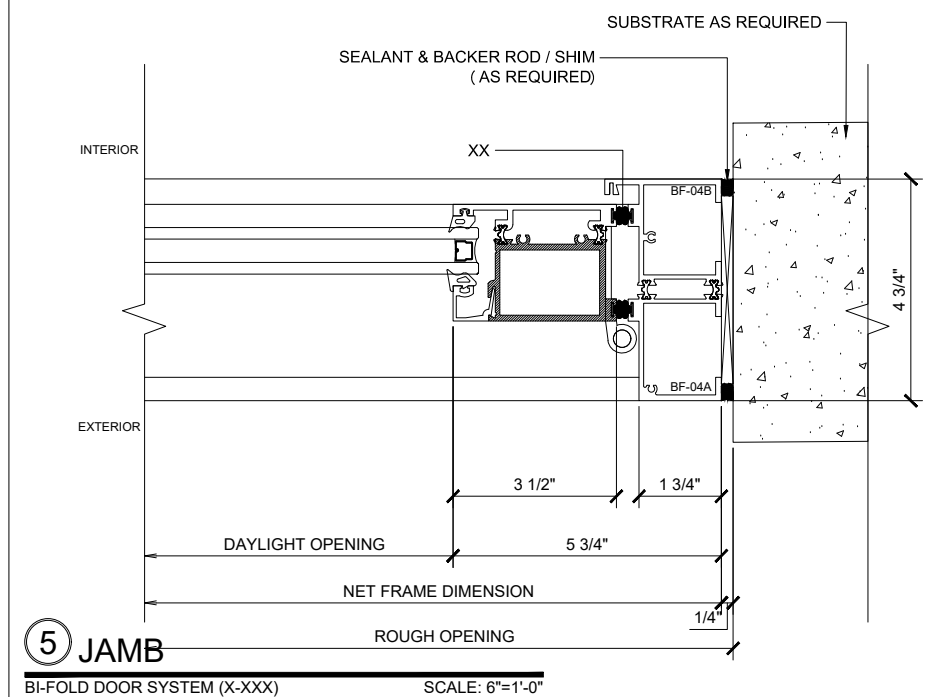
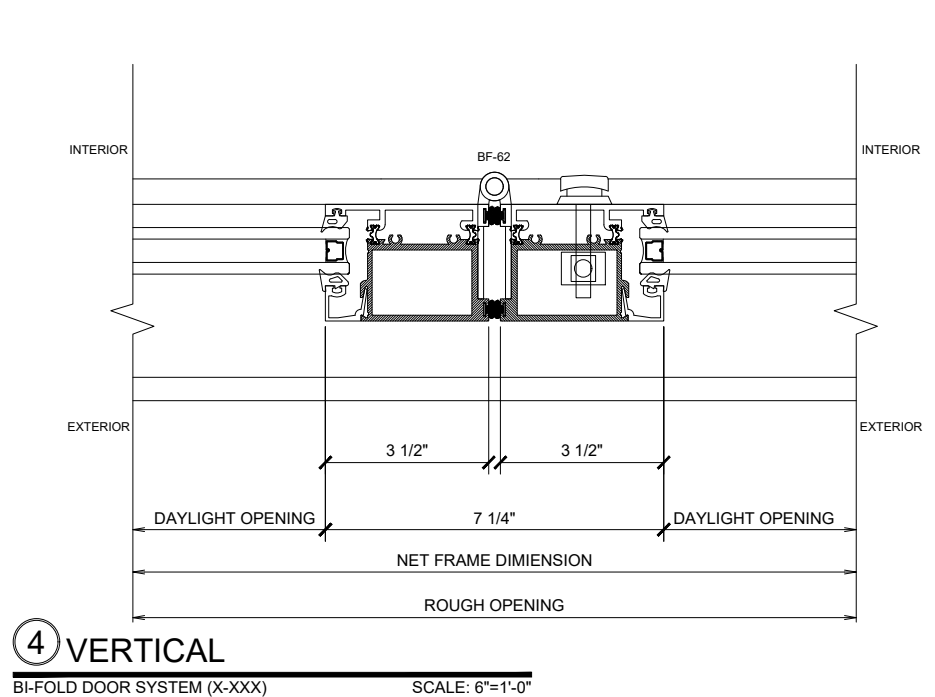
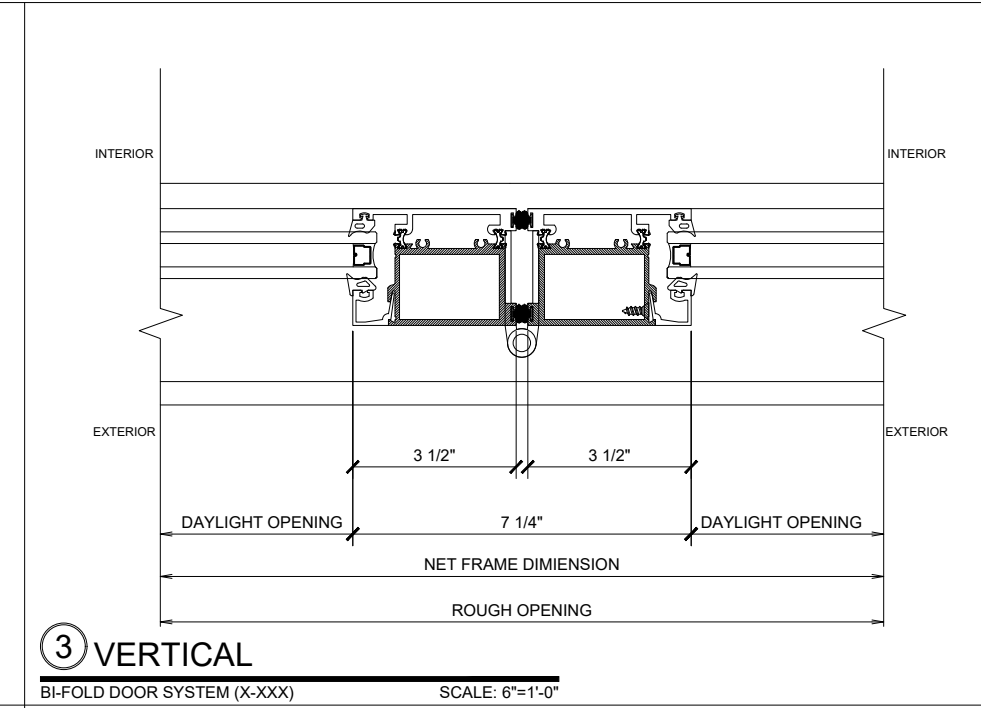
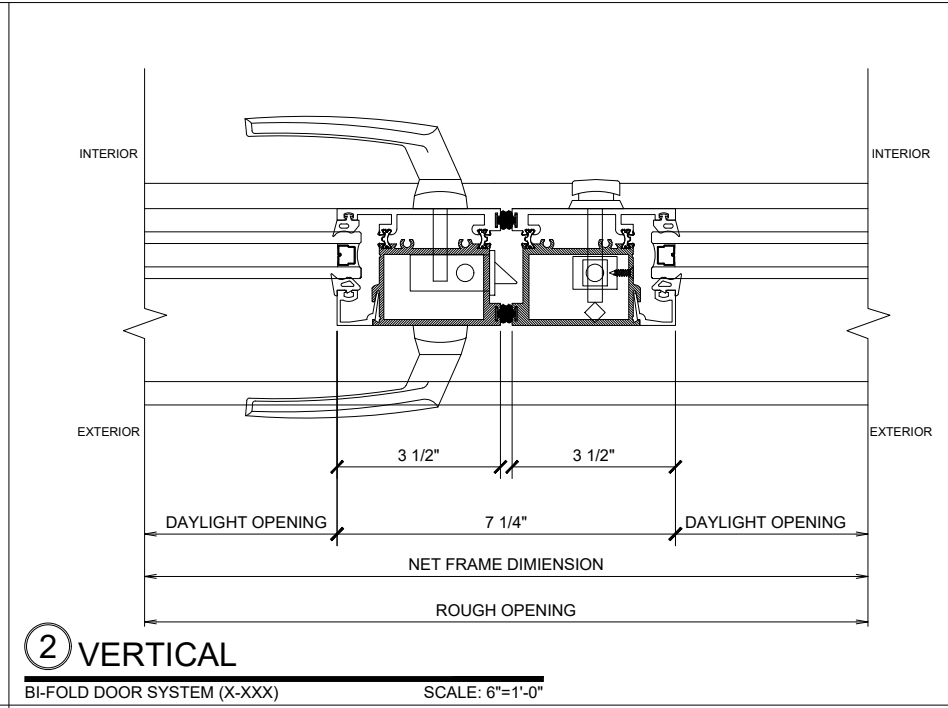
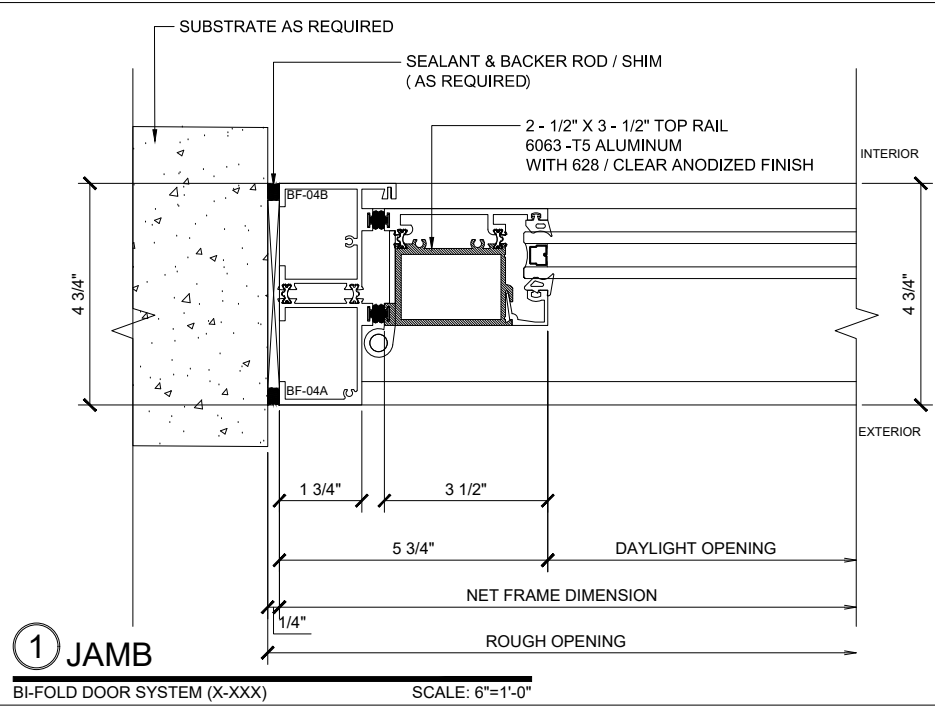
Custom finishes available

NOTE: When using maximum panel width & height 42" x 120" panel may exceed maximum panel weight of 220 lbs, consult PRL for details.



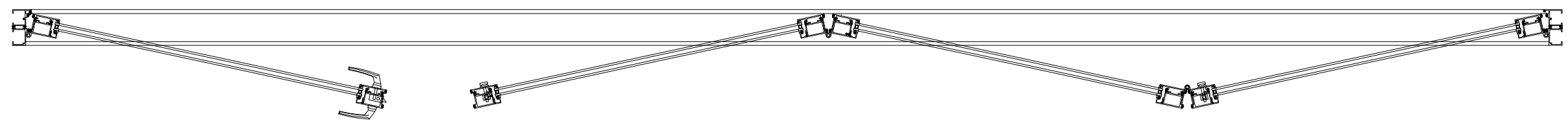
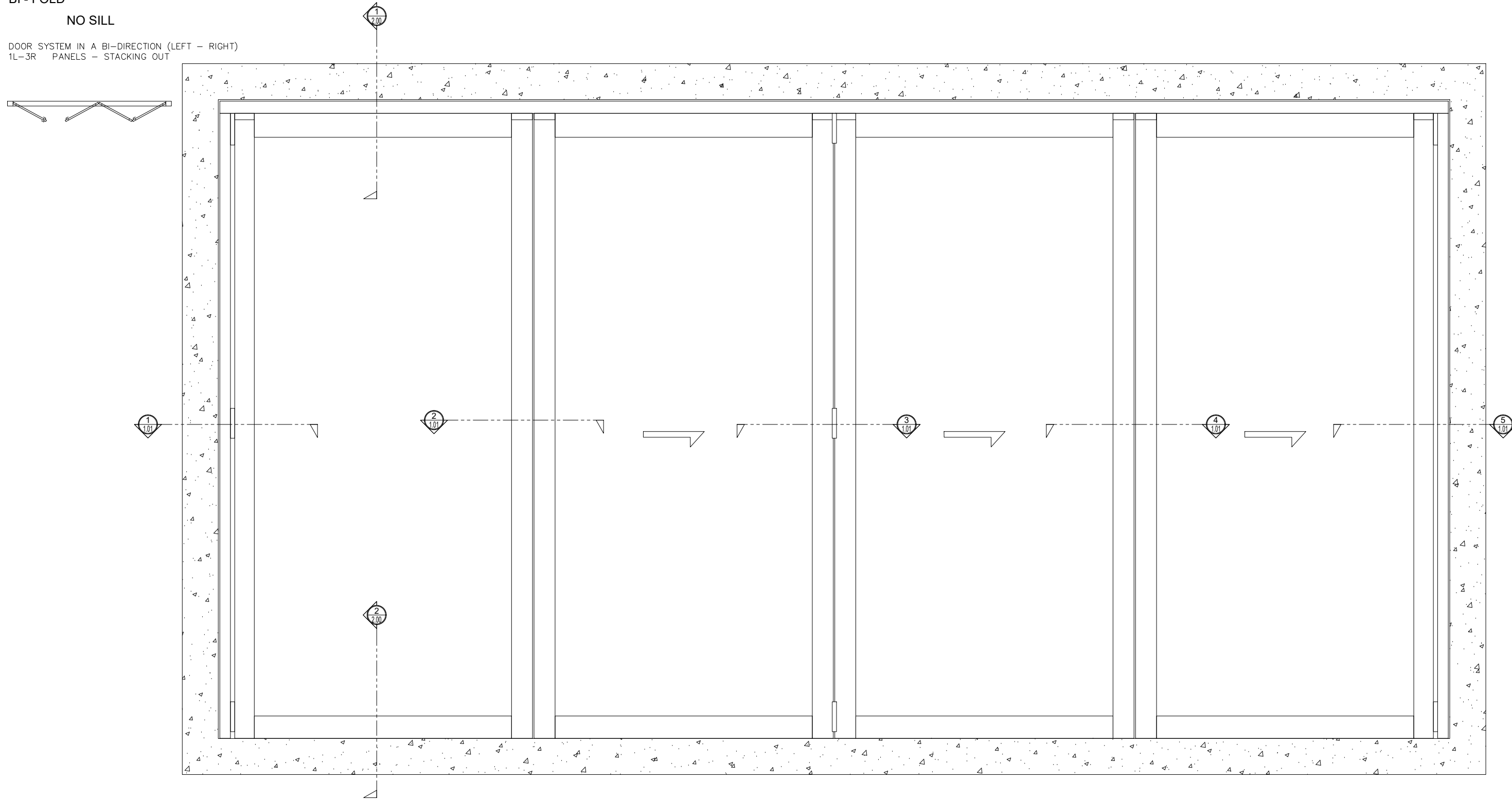
② HIGH SILL (@DOOR)

BI-FOLD DOOR SYSTEM (X-XXX) SCALE: 6"=1'-0"



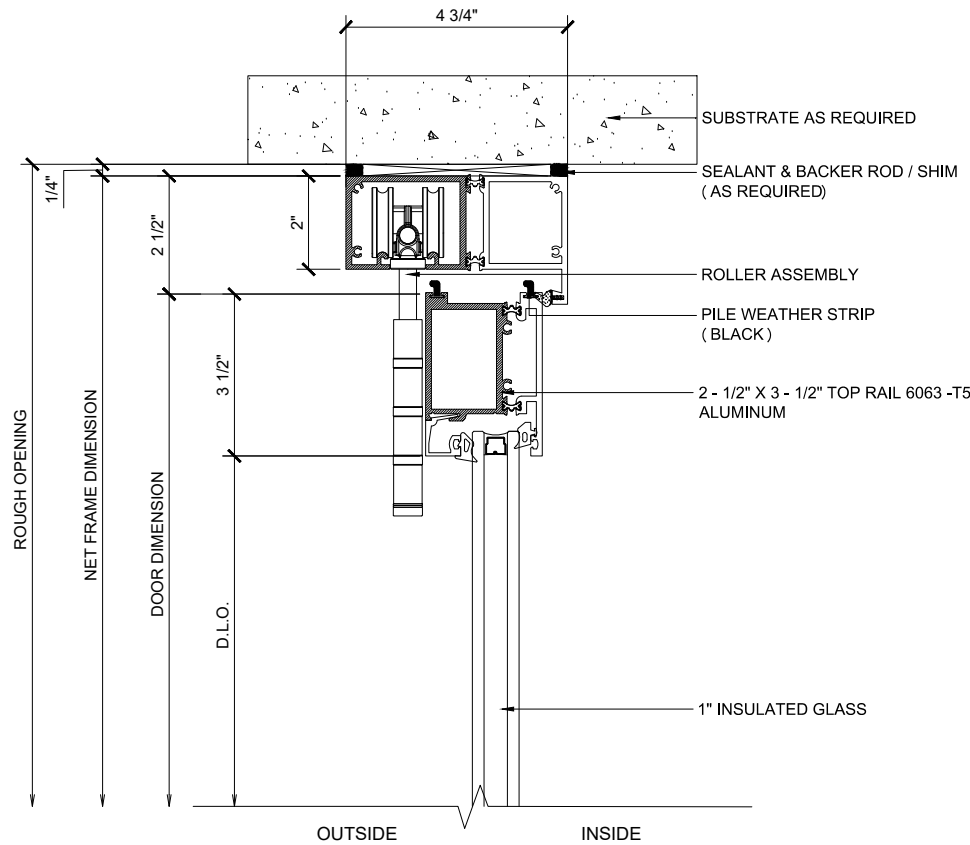
BI - FOLD NO SILL

DOOR SYSTEM IN A BI-DIRECTION (LEFT - RIGHT)
1L-3R PANELS - STACKING OUT

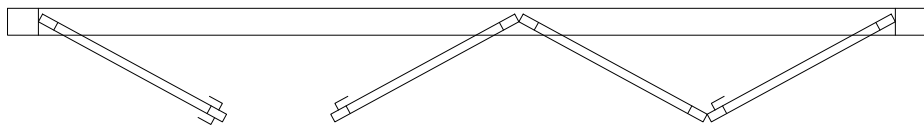


BI - FOLD
NO SILL

DOOR SYSTEM IN A BI-DIRECTION (LEFT - RIGHT)
 3L-1R PANELS - STACKING OUT
 X - DOORS



① HEAD (@DOOR)
 BI-FOLD DOOR SYSTEM (X-XXX) SCALE: 6"=1'-0"



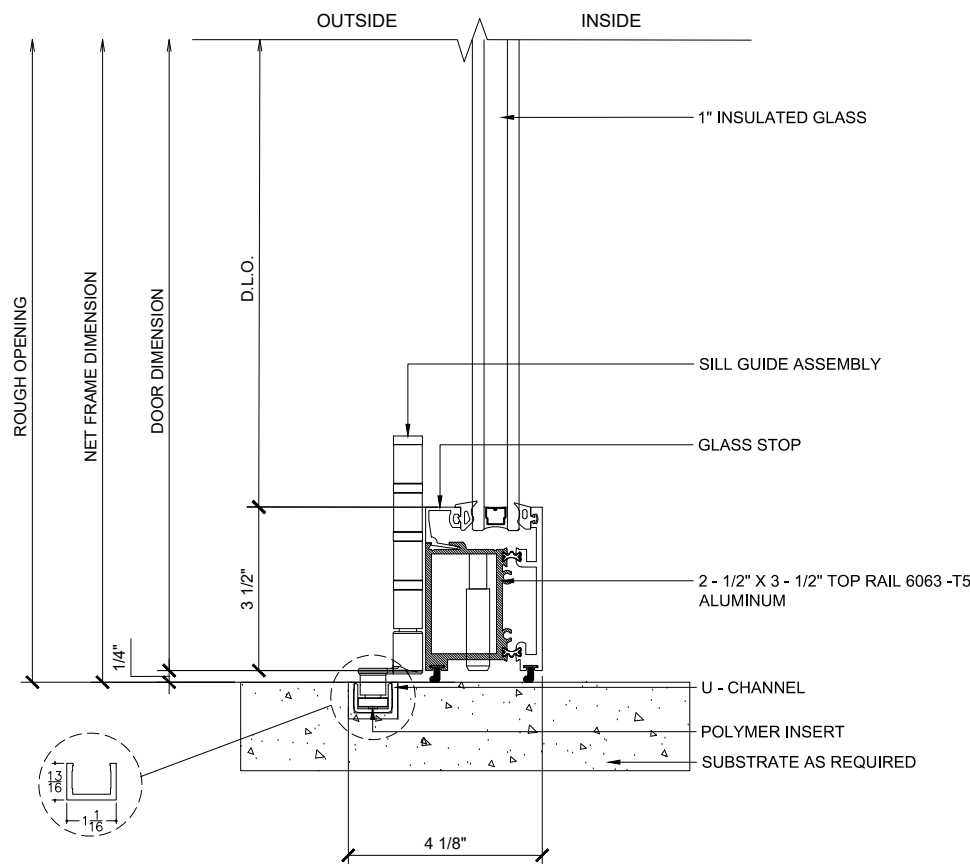
A CONFIGURATION
 BI-FOLD DOOR SYSTEM (X-XXX) SCALE: 6"=1'-0"

- Finishes:
- Clear and Bronze anodized finishes Class 1
 - Standard Mill Finish available for custom colors
 - Kynar

Custom finishes available

NOTE: When using maximum panel width & height 42" x 120" panel may exceed maximum panel weight of 220 lbs, consult PRL for details.

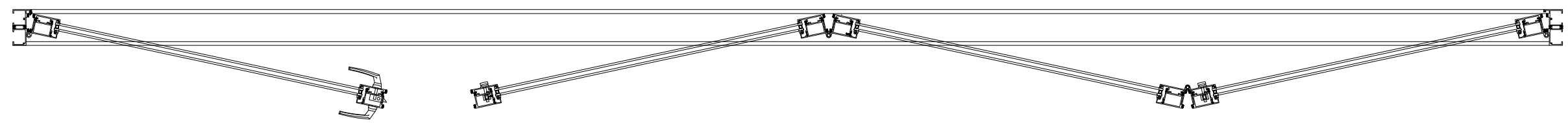
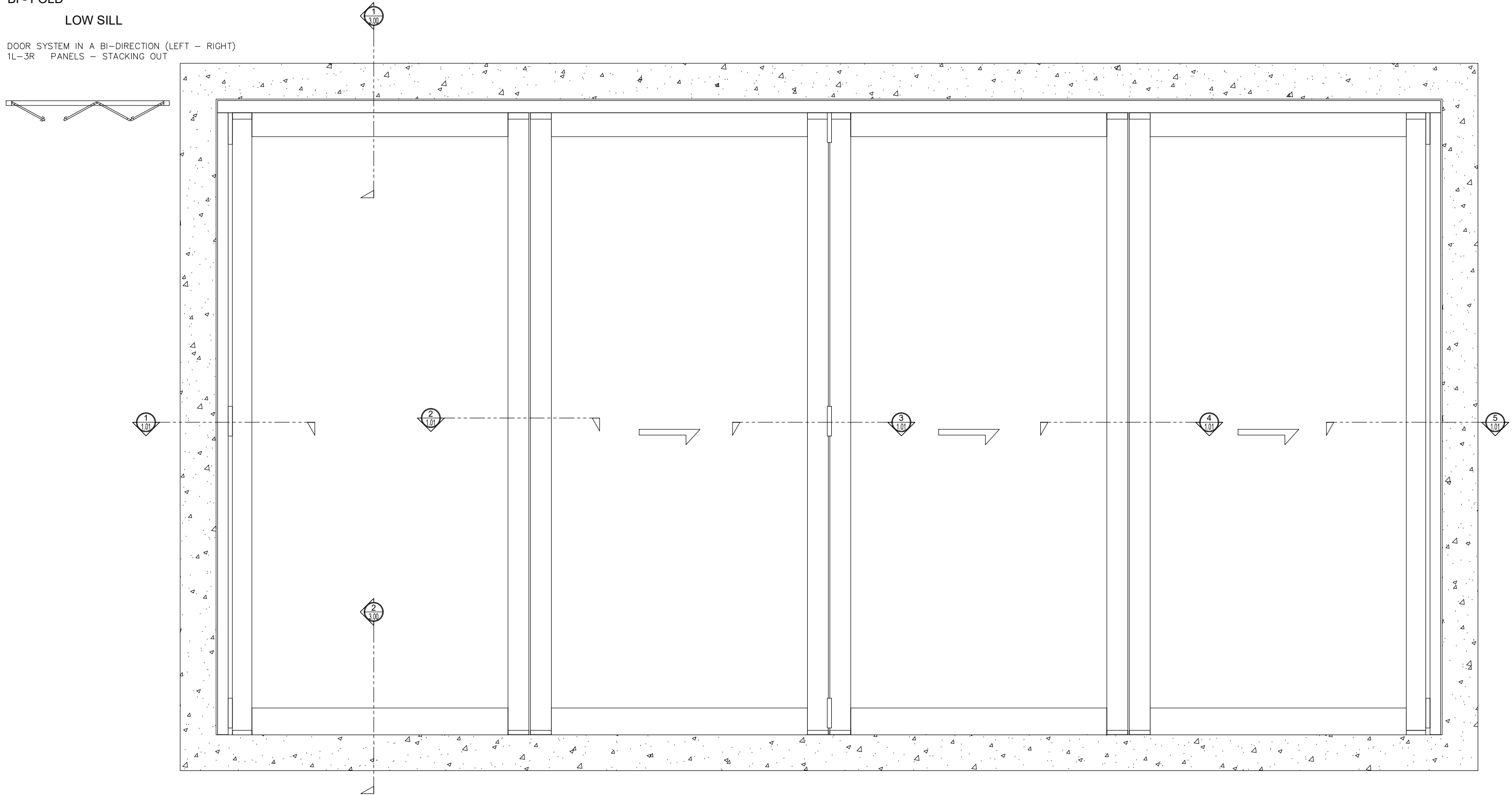
NO WATERPROOF



② NO SILL (@DOOR)
 BI-FOLD DOOR SYSTEM (X-XXX) SCALE: 6"=1'-0"

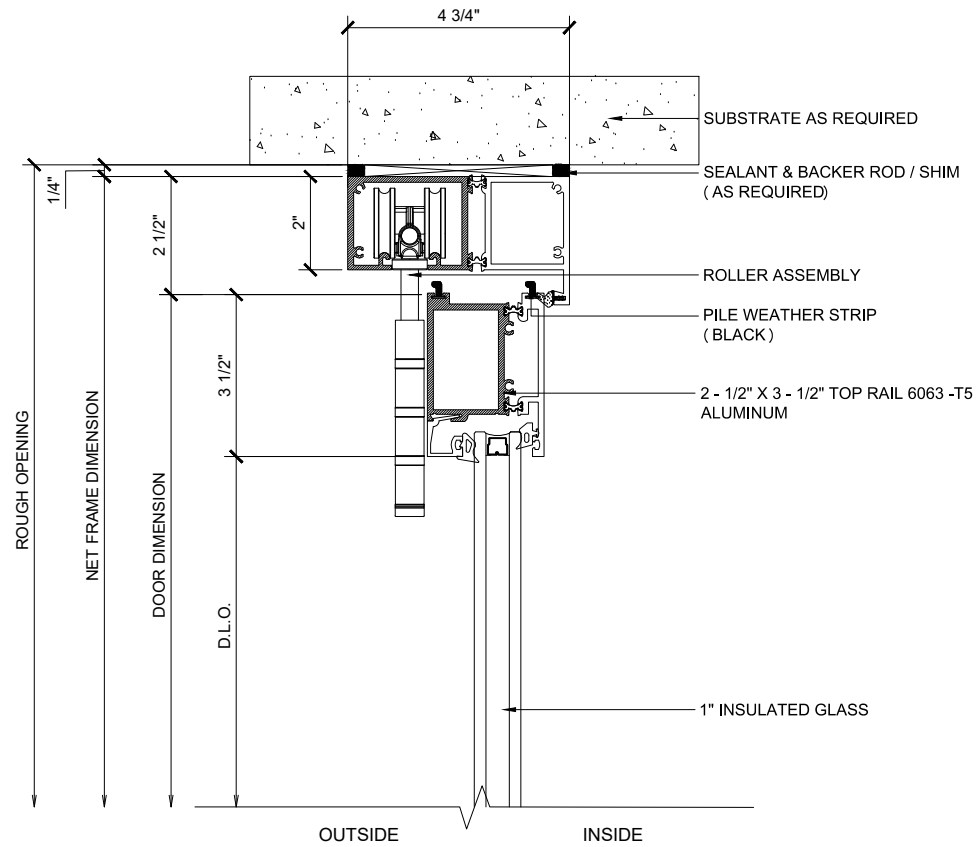
BI - FOLD LOW SILL

DOOR SYSTEM IN A BI-DIRECTION (LEFT - RIGHT)
1L-3R PANELS - STACKING OUT



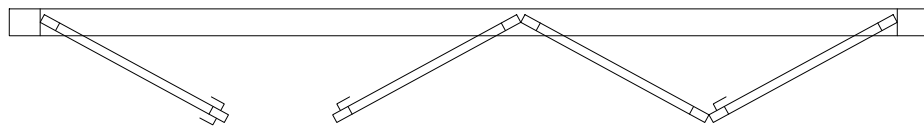
BI - FOLD LOW SILL

DOOR SYSTEM IN A BI-DIRECTION (LEFT - RIGHT)
 3L-1R PANELS - STACKING OUT
 X - DOORS



① HEAD (@DOOR)

BI-FOLD DOOR SYSTEM (X-XXX) SCALE: 6"=1'-0"



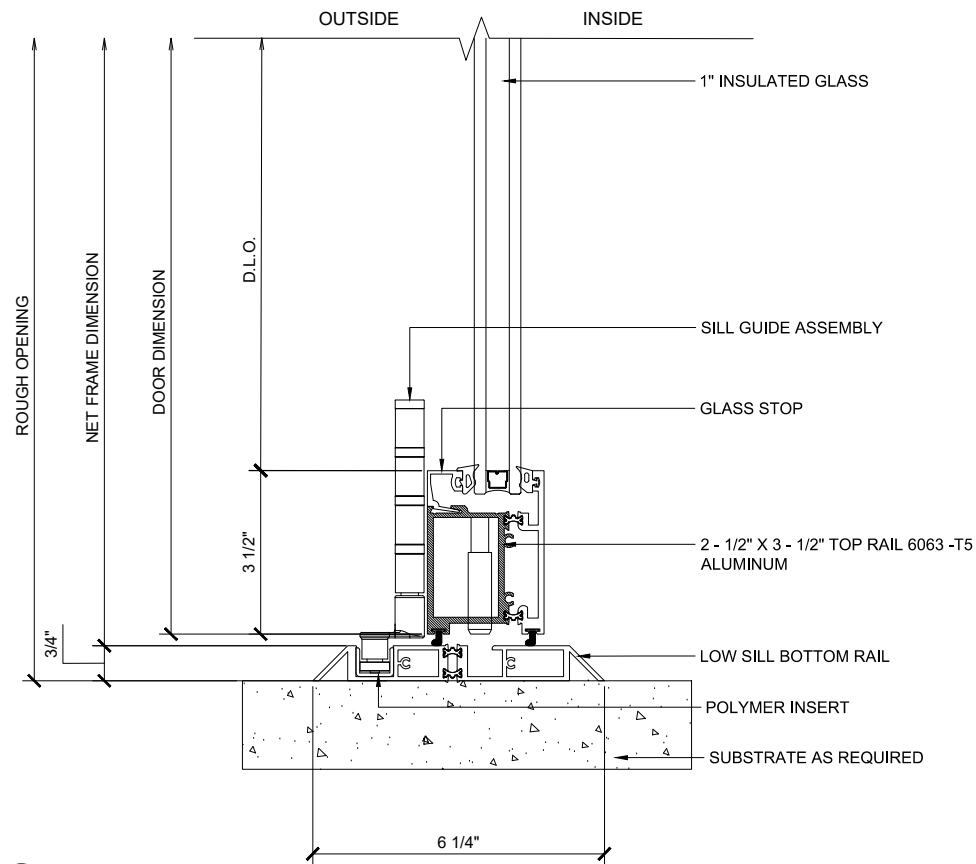
Ⓐ CONFIGURATION

BI-FOLD DOOR SYSTEM (X-XXX) SCALE: 6"=1'-0"

Finishes:

- Clear and Bronze anodized finishes Class 1
- Standard Mill Finish available for custom colors
- Kynar

Custom finishes available



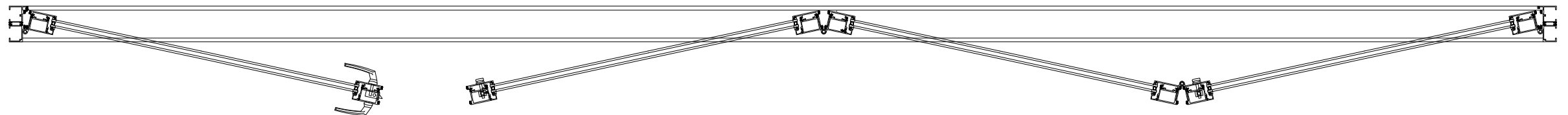
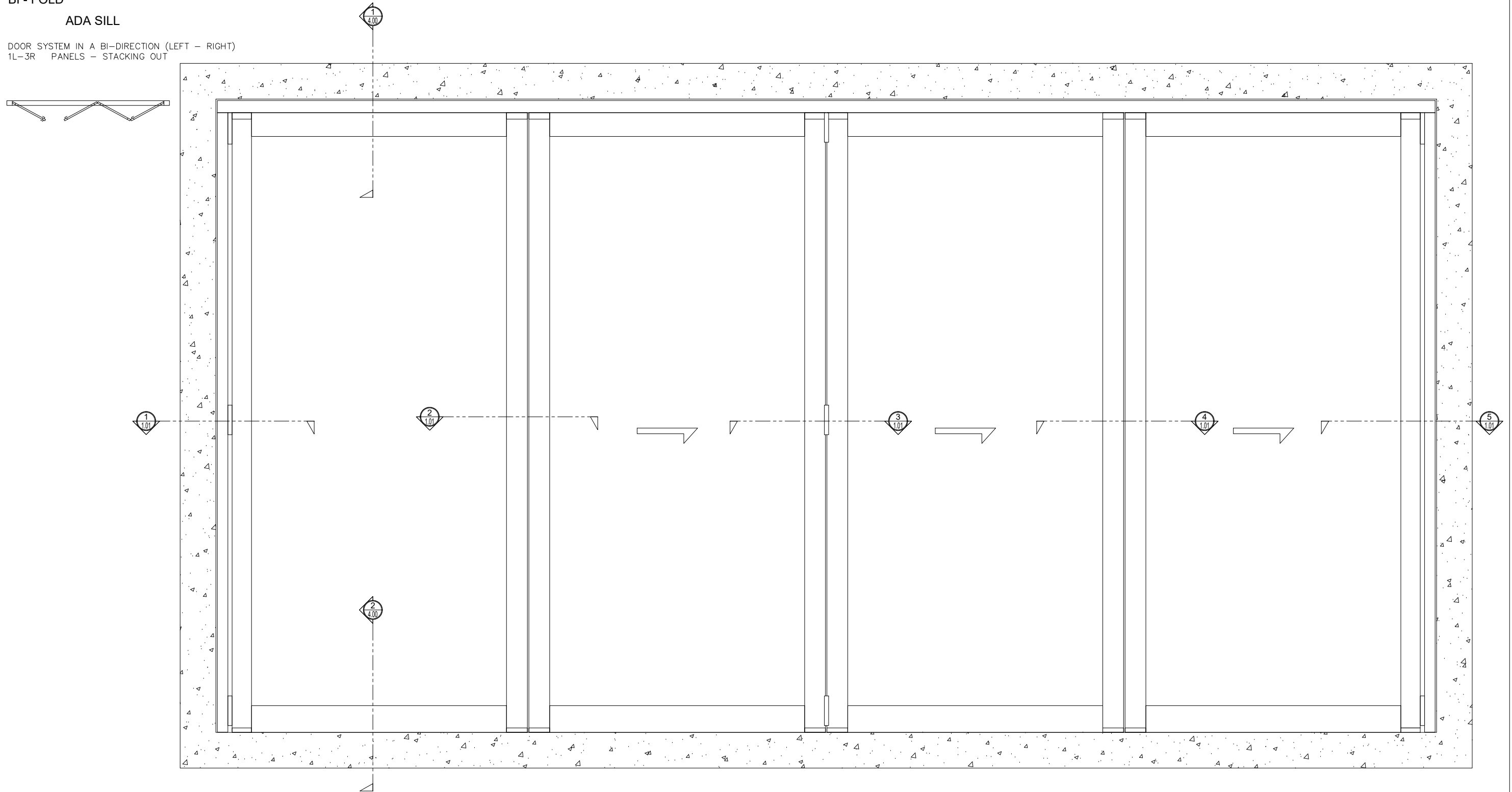
② LOW SILL (@DOOR)

BI-FOLD DOOR SYSTEM (X-XXX) SCALE: 6"=1'-0"

BI - FOLD

ADA SILL

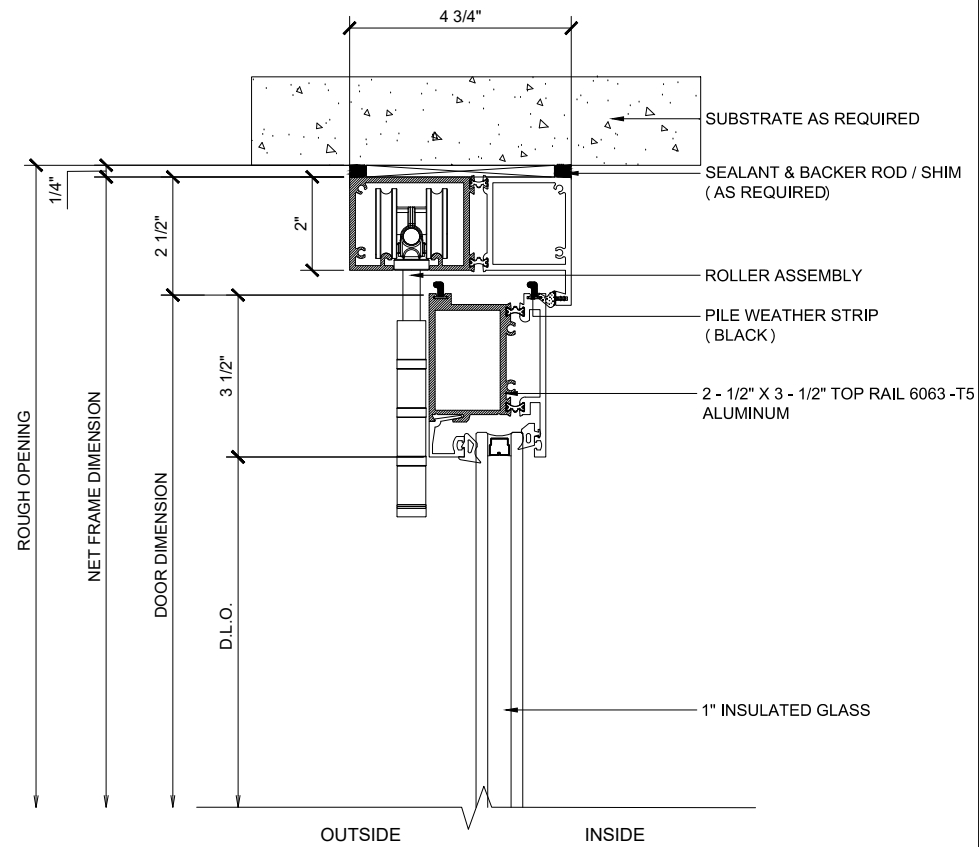
DOOR SYSTEM IN A BI-DIRECTION (LEFT - RIGHT)
1L-3R PANELS - STACKING OUT



BI - FOLD

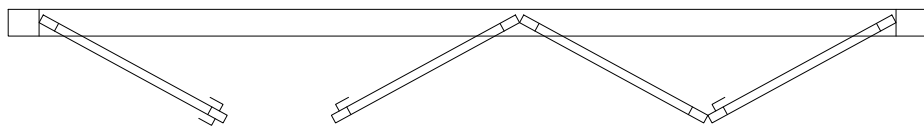
ADA SILL

DOOR SYSTEM IN A BI-DIRECTION (LEFT - RIGHT)
 3L-1R PANELS - STACKING OUT
 X - DOORS



① HEAD (@DOOR)

BI-FOLD DOOR SYSTEM (X-XXX) SCALE: 6"=1'-0"



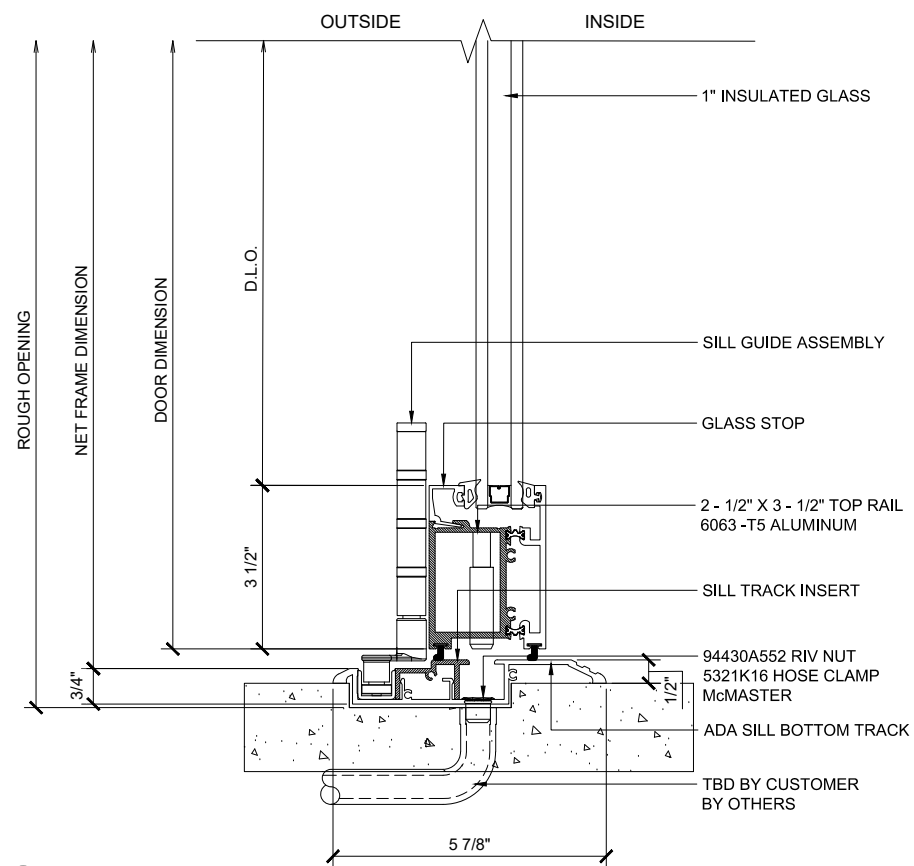
Ⓐ CONFIGURATION

BI-FOLD DOOR SYSTEM (X-XXX) SCALE: 6"=1'-0"

Finishes:

- Clear and Bronze anodized finishes Class 1
- Standard Mill Finish available for custom colors
- Kynar

Custom finishes available



② ADA SILL (@DOOR)

BI-FOLD DOOR SYSTEM (X-XXX) SCALE: 6"=1'-0"