

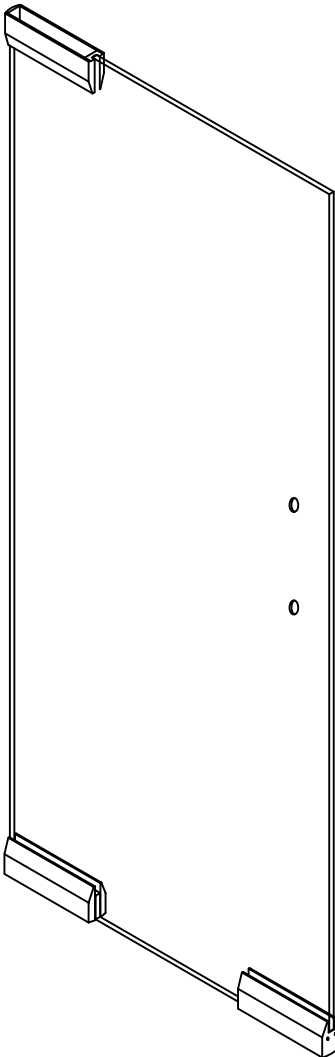
F-STYLE DOOR

9 1/2" PL150DS TOP & BOTTOM

PRL GLASS
SYSTEMS
INC.



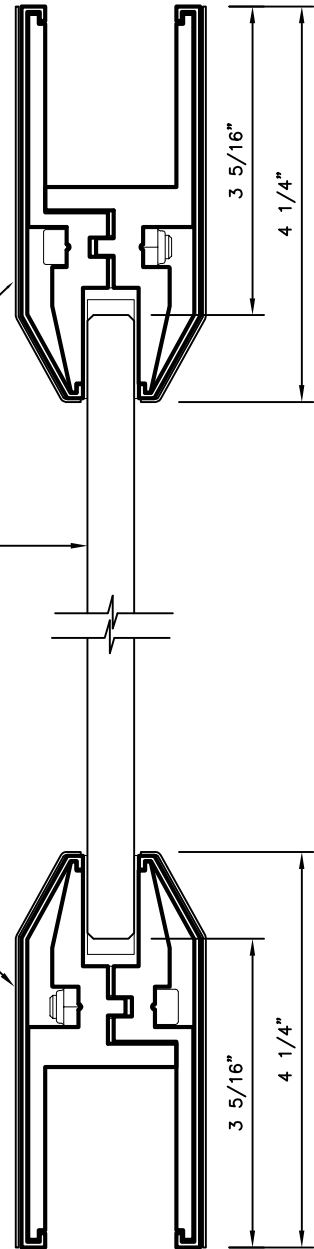
* FINISHES AVAILABLE :
8 POLISHED & # 4 SATIN
STAINLESS
US3 POLISHED & US4 SATIN
BRASS (NON LACQUER COATED)
US10B
ANODIZED PAINTED



9 1/2" PL-150DS TOP PATCH RAIL
(CLAD) BY P.R.L. GLASS

1/2" CLEAR TEMPERED GLASS
BY P.R.L. GLASS

9 1/2" PL-150DS BTM PATCH RAIL
(CLAD) BY P.R.L. GLASS



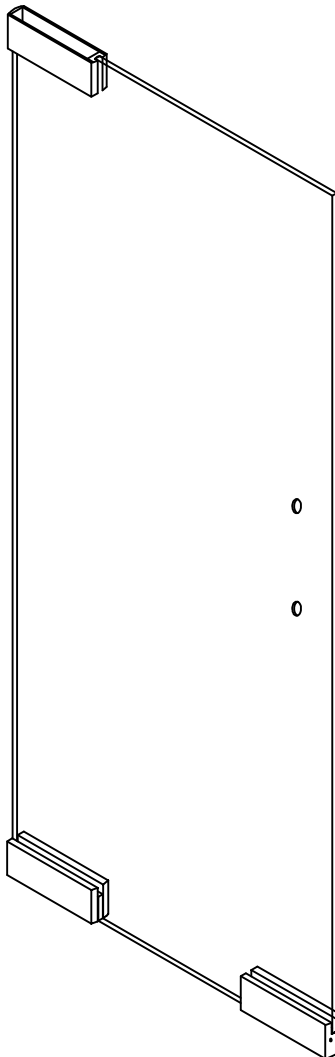
F-STYLE DOOR

9 1/2" PL350DS TOP & BOTTOM

PRL GLASS
SYSTEMS
INC.



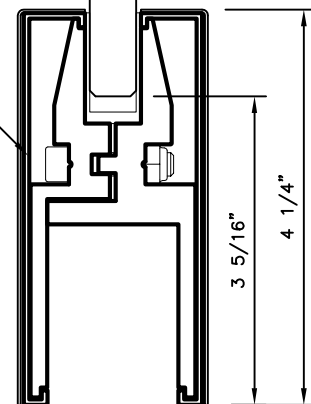
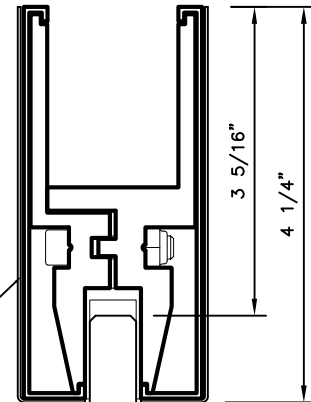
* FINISHES AVAILABLE :
8 POLISHED & # 4 SATIN
STAINLESS
US3 POLISHED & US4 SATIN
BRASS (NON LACQUER COATED)
US10B
ANODIZED PAINTED



9 1/2" PL-350DS TOP PATCH RAIL
(CLAD) BY P.R.L. GLASS

1/2" CLEAR TEMPERED GLASS
BY P.R.L. GLASS

9 1/2" PL-350DS BTM PATCH RAIL
(CLAD) BY P.R.L. GLASS

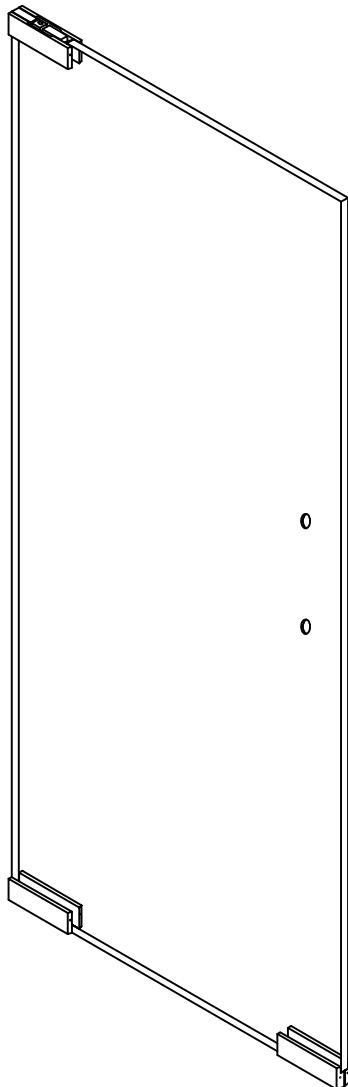


F-STYLE DOOR EURO TOP & BOTTOM PATCHES

PRL GLASS
SYSTEMS
INC.



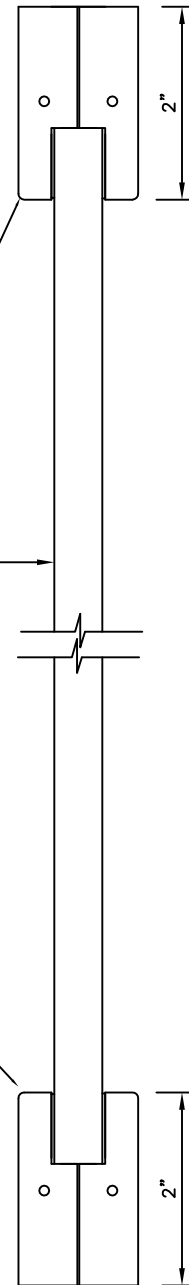
★ FINISHES AVAILABLE :
8 POLISHED & # 4 SATIN
STAINLESS
US3 POLISHED & US4 SATIN
BRASS (NON LACQUER COATED)
US10B
ANODIZED PAINTED



PL424 - 2 X 6 $\frac{1}{2}$ " EURO TOP PATCH
(CLAD) BY P.R.L. GLASS

$\frac{1}{2}$ " CLEAR TEMPERED GLASS
BY P.R.L. GLASS

PL414 - 2 X 6 $\frac{1}{2}$ " EURO BTM PATCH
(CLAD) BY P.R.L. GLASS

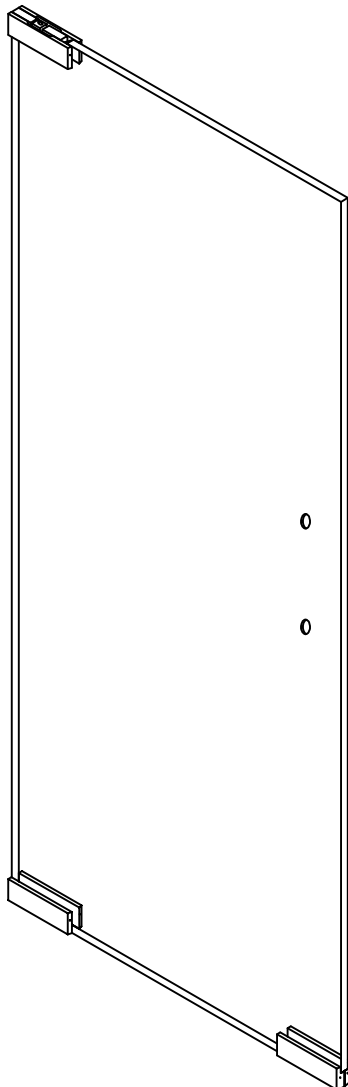


F-STYLE DOOR EURO TOP & BOTTOM PATCHES

PRL GLASS
SYSTEMS
INC.



★ FINISHES AVAILABLE :
8 POLISHED & # 4 SATIN
STAINLESS
US3 POLISHED & US4 SATIN
BRASS (NON LACQUER COATED)
US10B
ANODIZED PAINTED



PL420 - 2 X 6 $\frac{1}{2}$ " EURO TOP PATCH
(CLAD) BY P.R.L. GLASS

$\frac{3}{4}$ " CLEAR TEMPERED GLASS
BY P.R.L. GLASS

PL410 - 2 X 6 $\frac{1}{2}$ " EURO BTM PATCH
(CLAD) BY P.R.L. GLASS

