

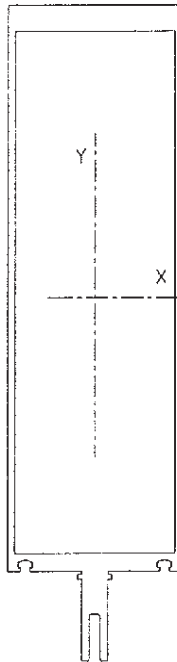
PROJECT NAME = cw1001

PROJECT NUMBER=1

Ixx	- NEUTRAL MOMENT OF INERTIA =	36.5477	AREA =	3.35779
Iyy	- NEUTRAL MOMENT OF INERTIA =	2.89253	PERIMETER =	25.7867
Ixy	- NEUTRAL MOMENT OF INERTIA =	.000000		
Ip	- POLAR MOMENT OF INERTIA =	39.4402		
Imax	- MAXIMUM MOMENT OF INERTIA =	36.5477		
Imin	- MINIMUM MOMENT OF INERTIA =	2.89253		
Theta	- PRINCIPLE TO LOCAL ANGLE =	.000000		
Rmax	- MAXIMUM RADIUS OF GYRATION=	3.29916		
Rmin	- MINIMUM RADIUS OF GYRATION=	.928137		
-----				
IXX	- GLOBAL MOMENT OF INERTIA =	124.718		
IYY	- GLOBAL MOMENT OF INERTIA =	8.13910		
IXY	- GLOBAL MOMENT OF INERTIA =	21.5079		
IP	- GLOBAL POLAR MOM. OF INER.=	132.857		
XCG	- X- CENTER OF GRAVITY =	1.25000		
YCG	- Y- CENTER OF GRAVITY =	5.12430		
AXX	- GLOBAL AREA MOMENT ABOUT-X=	17.2063		
AYY	- GLOBAL AREA MOMENT ABOUT-Y=	4.19724		

SECTION MODULI INFORMATION

EXTREME FIBER DISTANCE IN PRINCIPLE-X = -1.25000  
EXTREME FIBER DISTANCE IN PRINCIPLE-Y = -5.12430



PROJECT NAME = 1001steel

PROJECT NUMBER=1

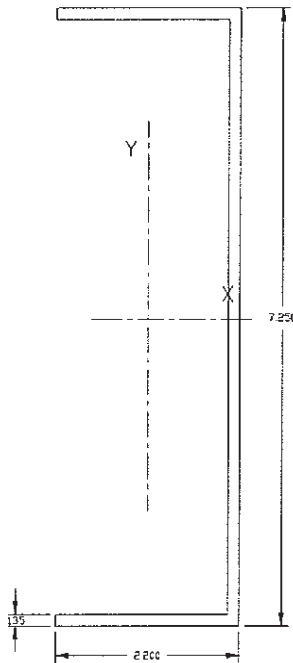
Ixx	- NEUTRAL MOMENT OF INERTIA =	11.3049	AREA =	1.53074
Iyy	- NEUTRAL MOMENT OF INERTIA =	.627278	PERIMETER =	23.0310
Ixy	- NEUTRAL MOMENT OF INERTIA =	.000000		
Ip	- POLAR MOMENT OF INERTIA =	11.9322		
Imax	- MAXIMUM MOMENT OF INERTIA =	11.3049		
Imin	- MINIMUM MOMENT OF INERTIA =	.627277		
Theta	- PRINCIPLE TO LOCAL ANGLE =	.000000		
Rmax	- MAXIMUM RADIUS OF GYRATION=	2.71758		
Rmin	- MINIMUM RADIUS OF GYRATION=	.640145		

---

IXX	- GLOBAL MOMENT OF INERTIA =	31.4198
IYY	- GLOBAL MOMENT OF INERTIA =	5.22709
IXY	- GLOBAL MOMENT OF INERTIA =	9.61899
IP	- GLOBAL POLAR MOM. OF INER.=	36.6469
XCG	- X- CENTER OF GRAVITY =	1.73348
YCG	- Y- CENTER OF GRAVITY =	3.62500
AXX	- GLOBAL AREA MOMENT ABOUT-X=	5.54895
AYY	- GLOBAL AREA MOMENT ABOUT-Y=	2.65351

#### SECTION MODULI INFORMATION

EXTREME FIBER DISTANCE IN PRINCIPLE-X = -1.73348  
EXTREME FIBER DISTANCE IN PRINCIPLE-Y = -3.62500



PROJECT NAME = CW-1002

PROJECT NUMBER=1

Ixx	- NEUTRAL MOMENT OF INERTIA =	24.1694	AREA =	2.23800
Iyy	- NEUTRAL MOMENT OF INERTIA =	1.52048	PERIMETER =	41.5325
Ixy	- NEUTRAL MOMENT OF INERTIA =	.000000		
Ip	- POLAR MOMENT OF INERTIA =	25.6899		
Imax	- MAXIMUM MOMENT OF INERTIA =	24.1694		
Imin	- MINIMUM MOMENT OF INERTIA =	1.52048		
Theta	- PRINCIPLE TO LOCAL ANGLE =	.000000		
Rmax	- MAXIMUM RADIUS OF GYRATION=	3.28627		
Rmin	- MINIMUM RADIUS OF GYRATION=	.824253		

-----

IXX	- GLOBAL MOMENT OF INERTIA =	68.1519
IYY	- GLOBAL MOMENT OF INERTIA =	3.49927
IXY	- GLOBAL MOMENT OF INERTIA =	8.76296
IP	- GLOBAL POLAR MOM. OF INER.=	71.6512
XCG	- X- CENTER OF GRAVITY =	.940306
YCG	- Y- CENTER OF GRAVITY =	4.43312
AXX	- GLOBAL AREA MOMENT ABOUT-X=	9.92133
AYY	- GLOBAL AREA MOMENT ABOUT-Y=	2.10441

#### SECTION MODULI INFORMATION

EXTREME FIBER DISTANCE IN PRINCIPLE-X = 1.55969  
EXTREME FIBER DISTANCE IN PRINCIPLE-Y = 4.81687

