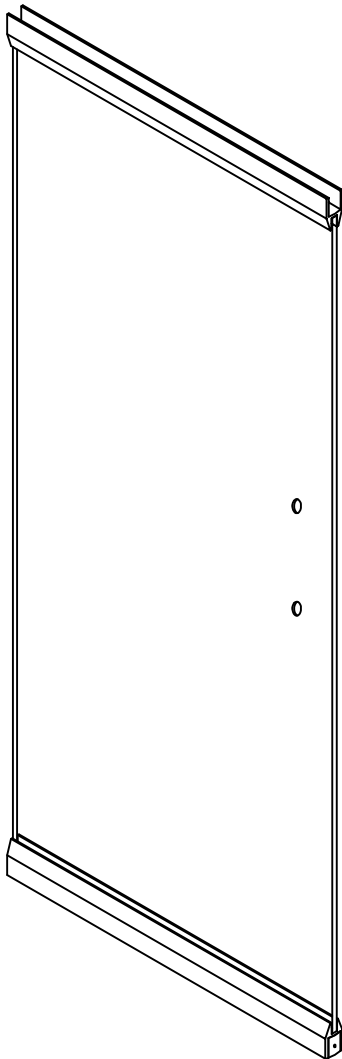


P-STYLE DOOR PL150 TOP & BTM.

PRL GLASS SYSTEMS INC.



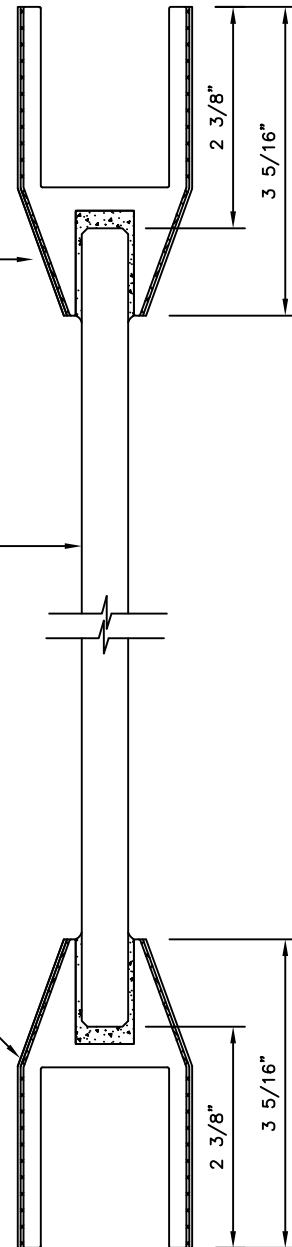
* FINISHES AVAILABLE :
8 POLISHED & # 4 SATIN
STAINLESS
US3 POLISHED & US4 SATIN
BRASS (NON LACQUER COATED)
US10B
ANODIZED PAINTED



PL-150 TOP RAIL
(CLAD)
BY P.R.L. GLASS

$\frac{1}{2}$ " CLEAR TEMPERED GLASS
BY P.R.L. GLASS

PL-150 BTM RAIL
(CLAD)
BY P.R.L. GLASS

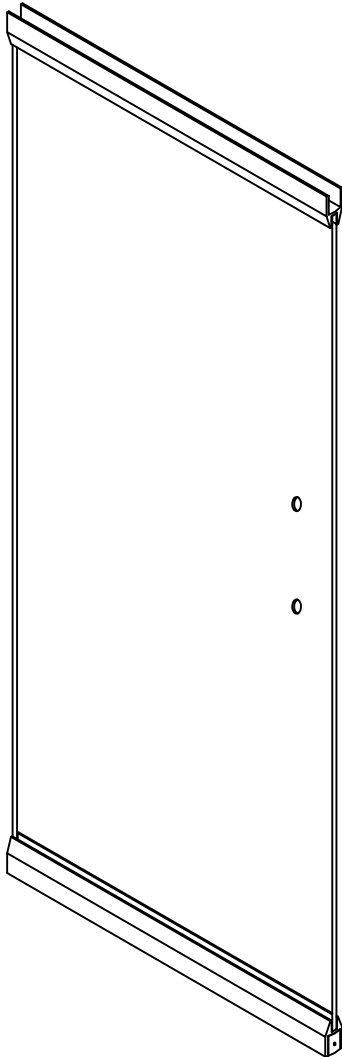


P-STYLE DOOR PL175 TOP & BTM.

PRL GLASS SYSTEMS
INC.



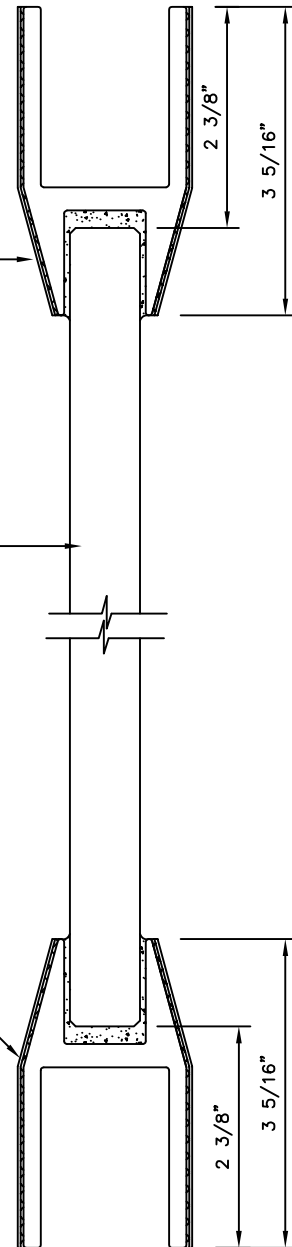
* FINISHES AVAILABLE :
8 POLISHED & # 4 SATIN
STAINLESS
US3 POLISHED & US4 SATIN
BRASS (NON LACQUER COATED)
US10B
ANODIZED PAINTED



PL-175 TOP RAIL
(CLAD)
BY P.R.L. GLASS

$\frac{3}{4}$ " CLEAR TEMPERED GLASS
BY P.R.L. GLASS

PL-175 BTM RAIL
(CLAD)
BY P.R.L. GLASS

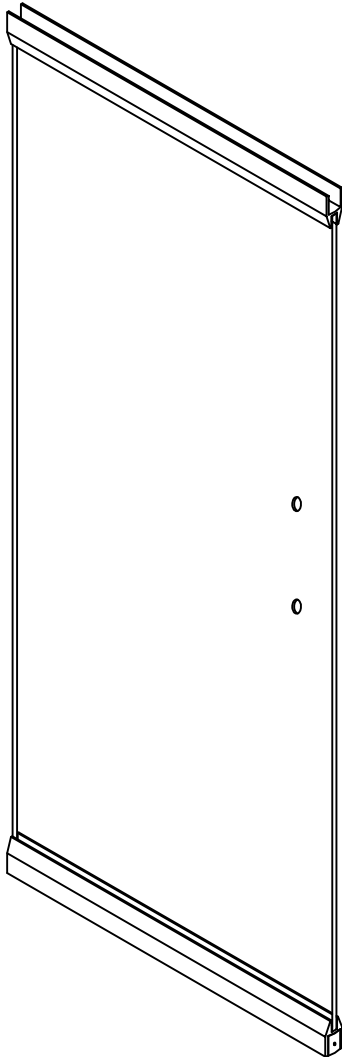


P-STYLE DOOR PL175 TOP & BTM.

PRL GLASS SYSTEMS
INC.



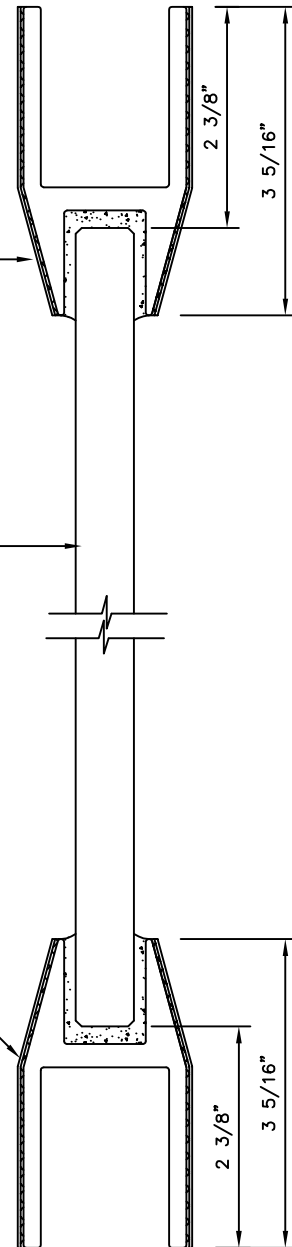
* FINISHES AVAILABLE :
8 POLISHED & # 4 SATIN
STAINLESS
US3 POLISHED & US4 SATIN
BRASS (NON LACQUER COATED)
US10B
ANODIZED PAINTED



PL-175 TOP RAIL
(CLAD)
BY P.R.L. GLASS

$\frac{5}{8}$ " CLEAR TEMPERED GLASS
BY P.R.L. GLASS

PL-175 BTM RAIL
(CLAD)
BY P.R.L. GLASS

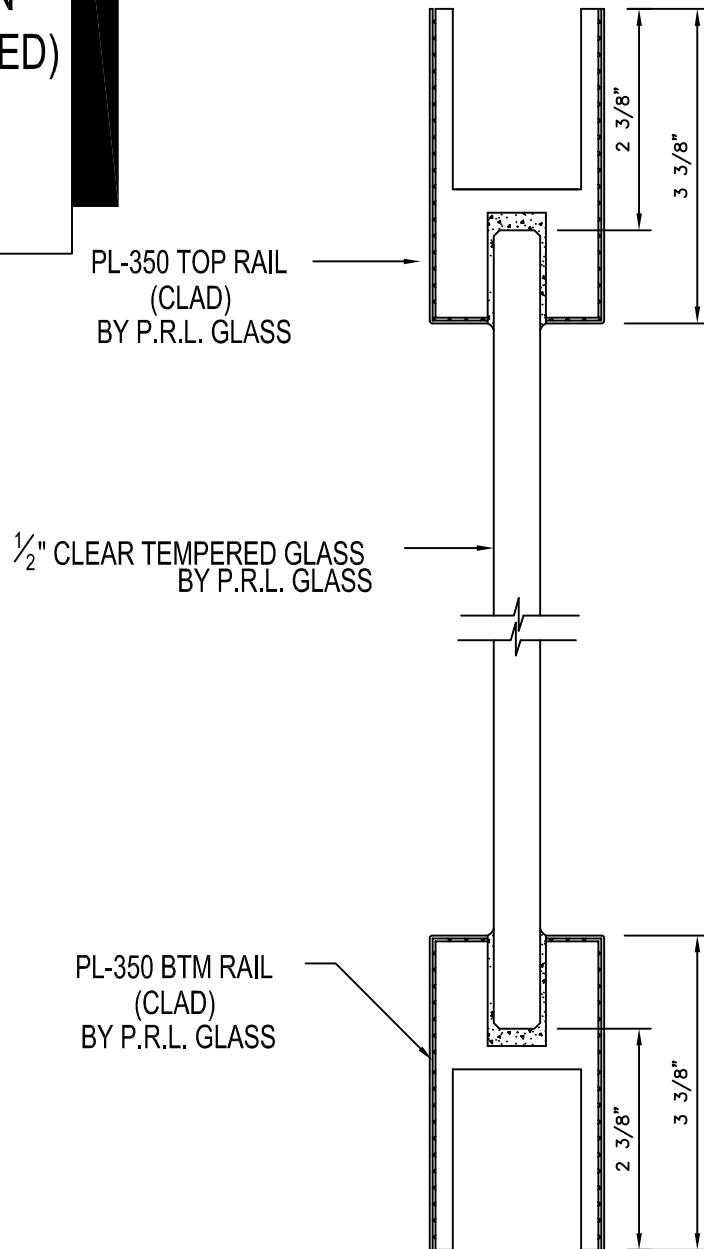
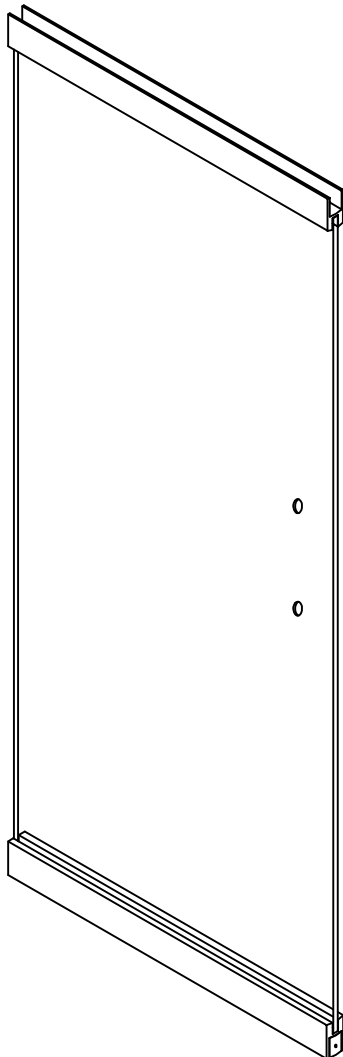


P-STYLE DOOR PL350 TOP & BTM.

PRL GLASS SYSTEMS
INC.



* FINISHES AVAILABLE :
8 POLISHED & # 4 SATIN
STAINLESS
US3 POLISHED & US4 SATIN
BRASS (NON LACQUER COATED)
US10B
ANODIZED PAINTED

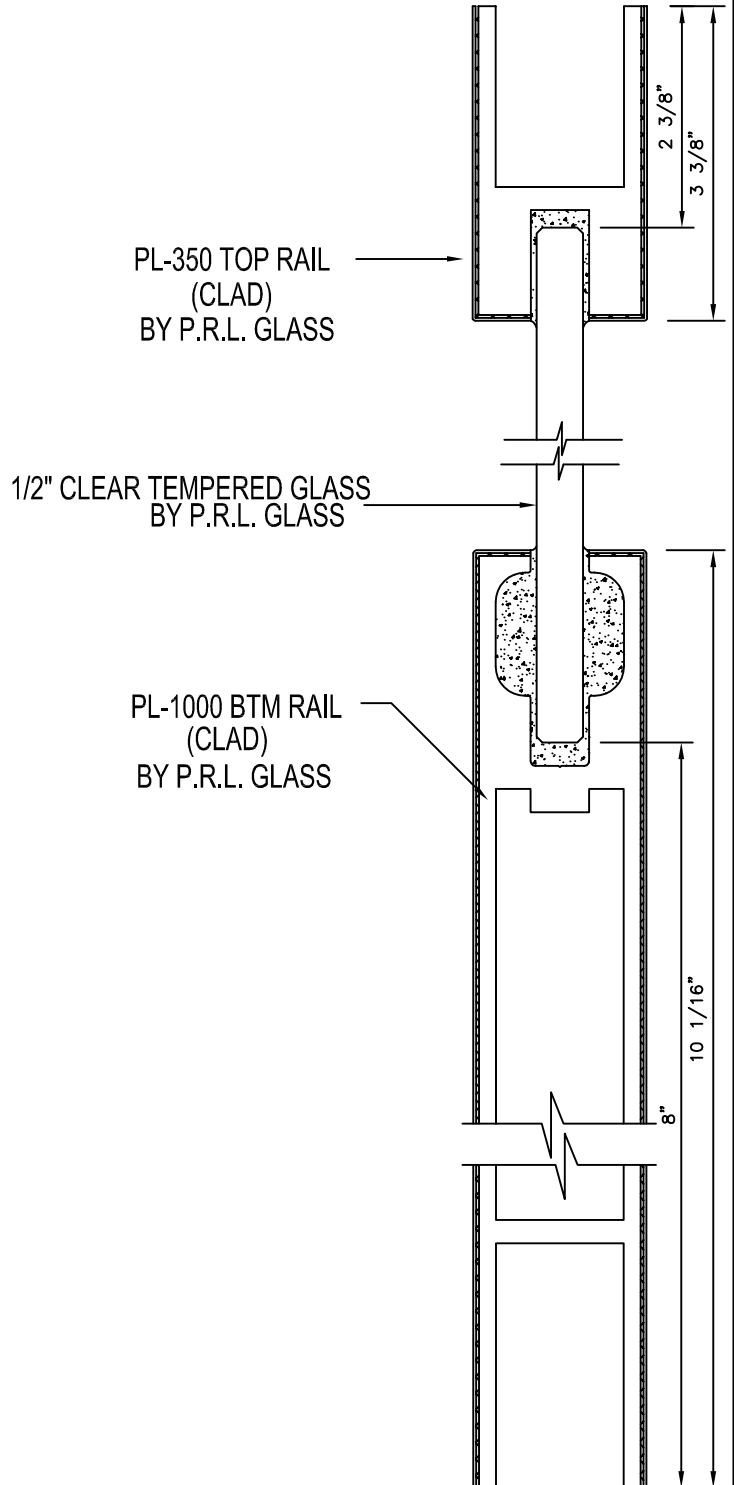
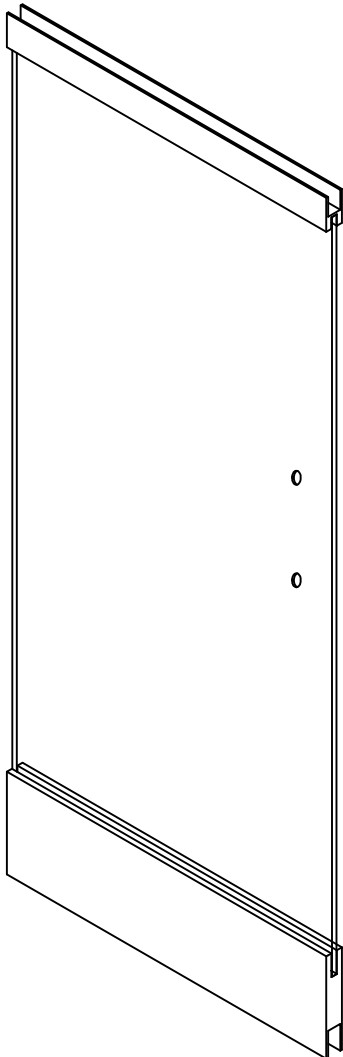


P-STYLE DOOR PL350 TOP PL1000 BOTTOM

PRL GLASS SYSTEMS INC.



* FINISHES AVAILABLE :
8 POLISHED & # 4 SATIN
STAINLESS
US3 POLISHED & US4 SATIN
BRASS (NON LACQUER COATED)
US10B
ANODIZED PAINTED

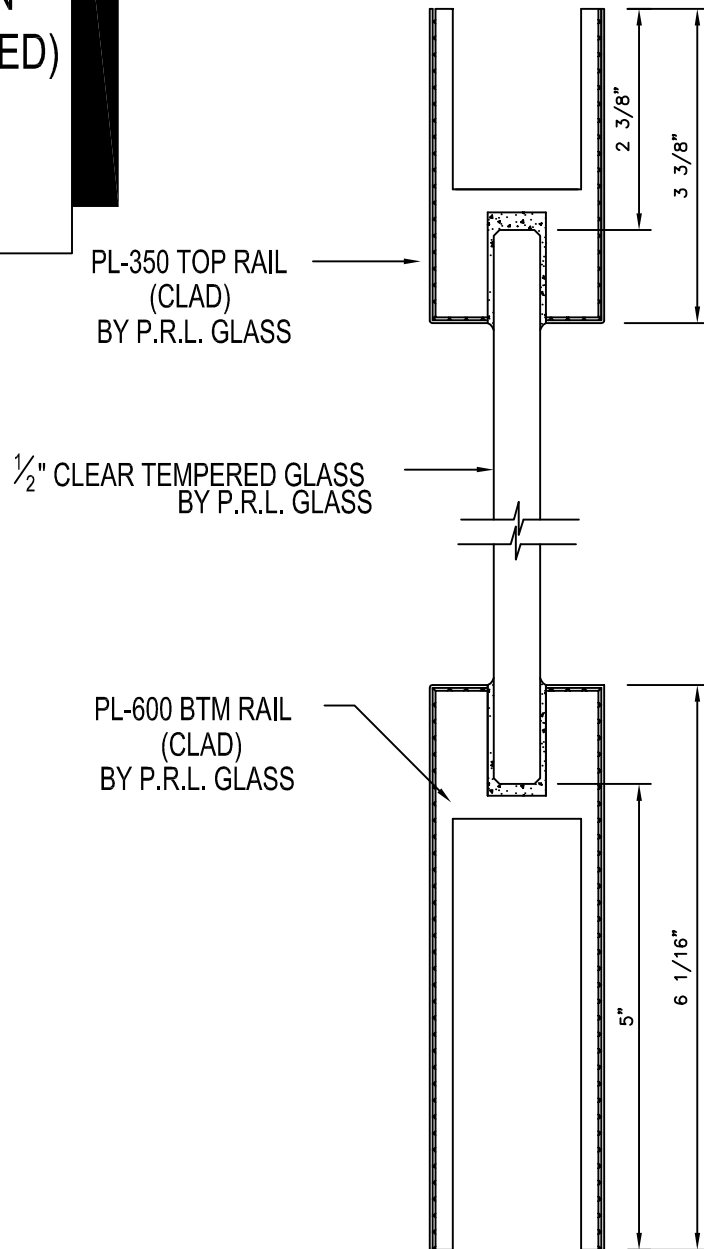
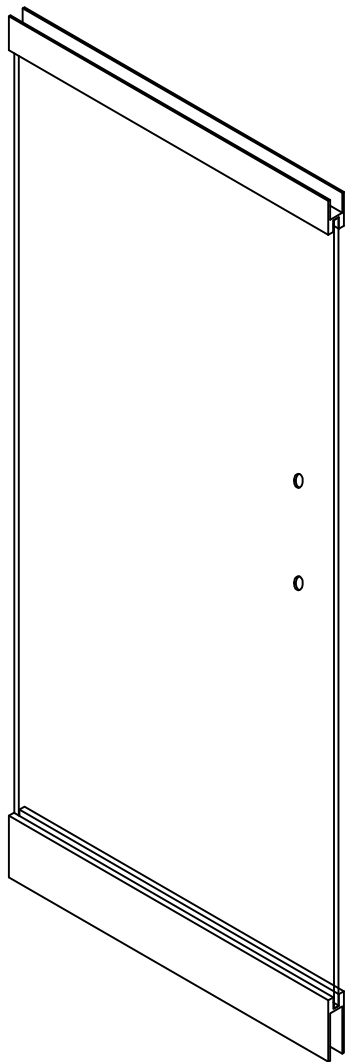


P-STYLE DOOR PL350 TOP PL600 BOTTOM

PRL GLASS SYSTEMS INC.



* FINISHES AVAILABLE :
8 POLISHED & # 4 SATIN
STAINLESS
US3 POLISHED & US4 SATIN
BRASS (NON LACQUER COATED)
US10B
ANODIZED PAINTED

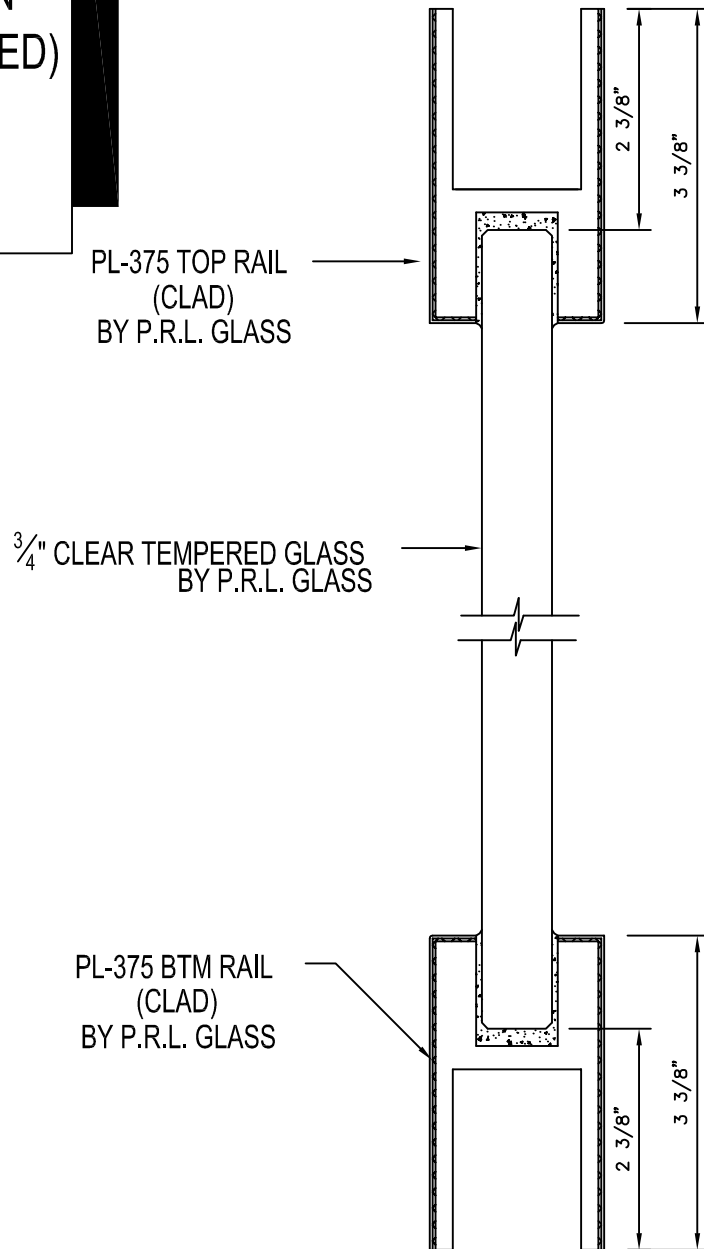
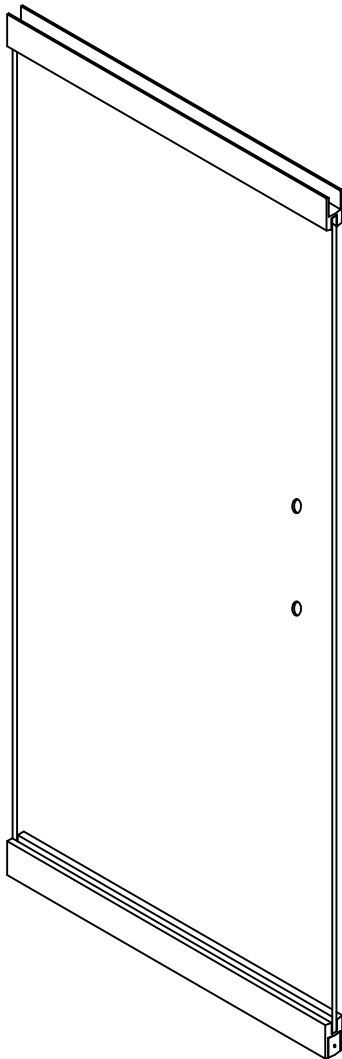


P-STYLE DOOR PL375 TOP & BTM.

PRL GLASS SYSTEMS
INC.



* FINISHES AVAILABLE :
8 POLISHED & # 4 SATIN
STAINLESS
US3 POLISHED & US4 SATIN
BRASS (NON LACQUER COATED)
US10B
ANODIZED PAINTED

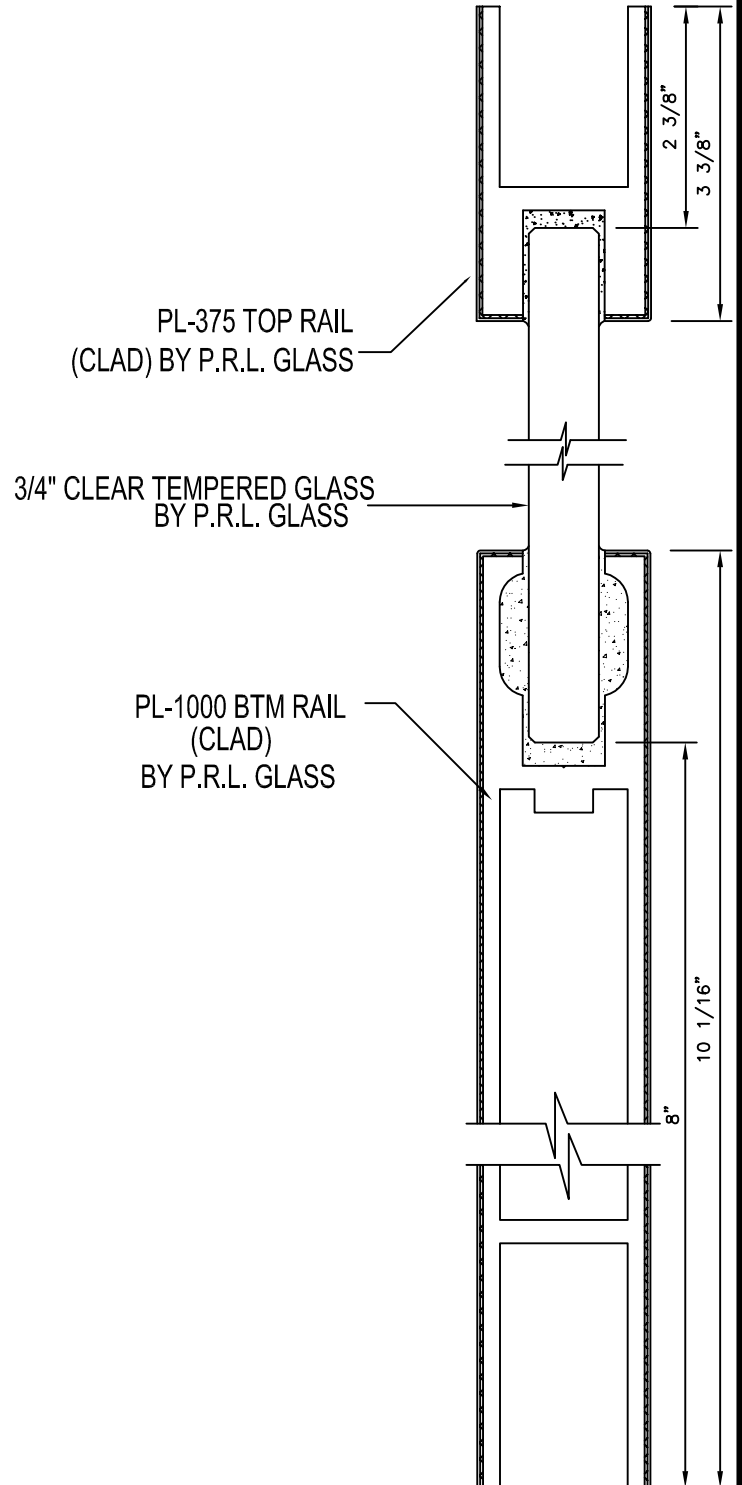
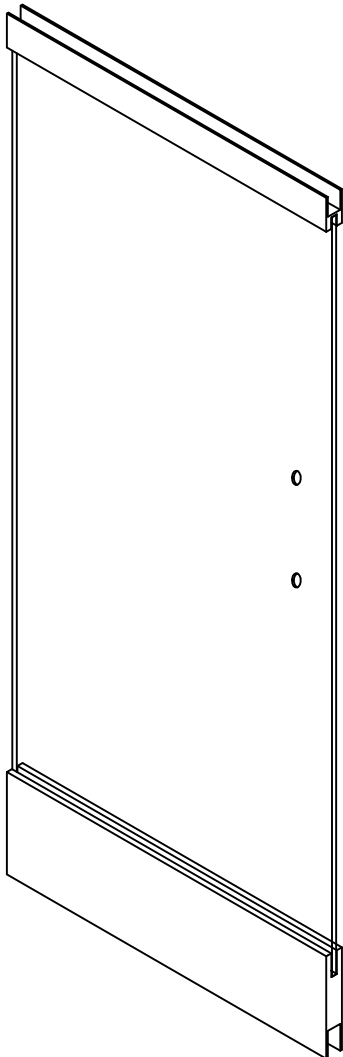


P-STYLE DOOR PL375 TOP PL1000 BOTTOM

PRL GLASS SYSTEMS INC.



* FINISHES AVAILABLE :
8 POLISHED & # 4 SATIN
STAINLESS
US3 POLISHED & US4 SATIN
BRASS (NON LACQUER COATED)
US10B
ANODIZED PAINTED

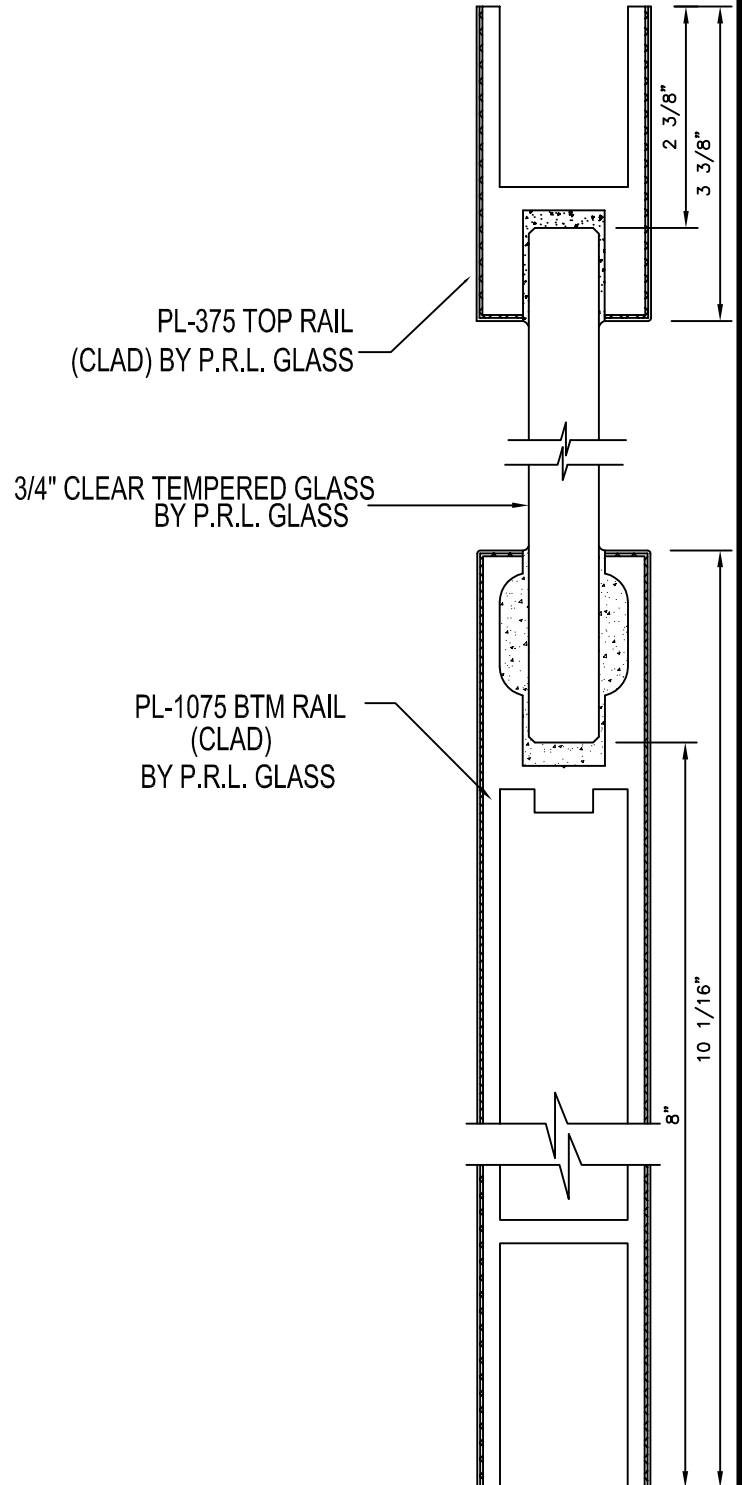
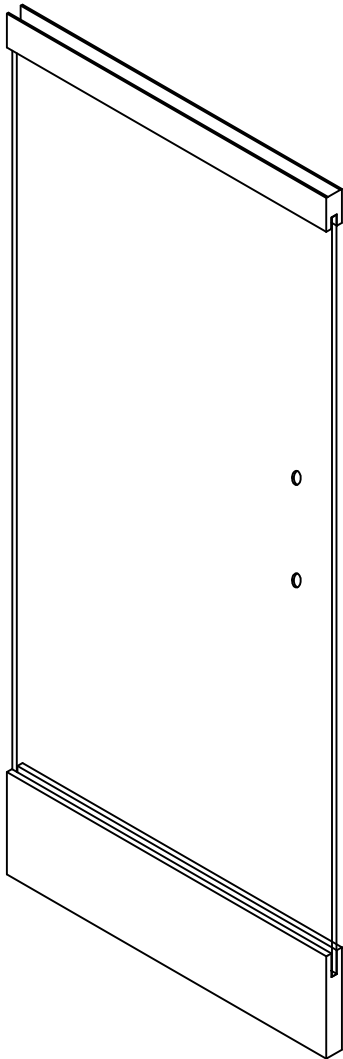


P-STYLE DOOR PL375 TOP PL1075 BOTTOM

PRL GLASS SYSTEMS INC.



* FINISHES AVAILABLE :
8 POLISHED & # 4 SATIN
STAINLESS
US3 POLISHED & US4 SATIN
BRASS (NON LACQUER COATED)
US10B
ANODIZED PAINTED

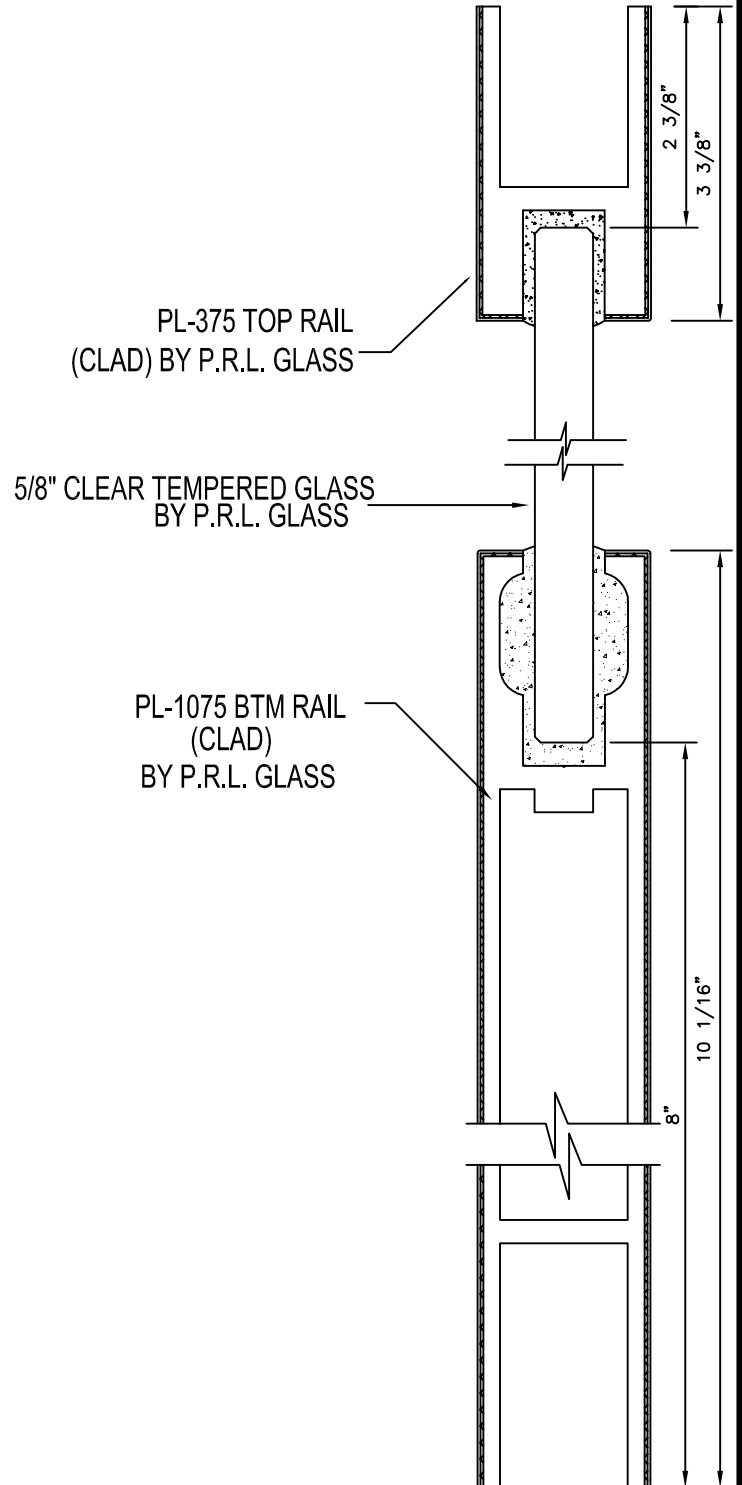
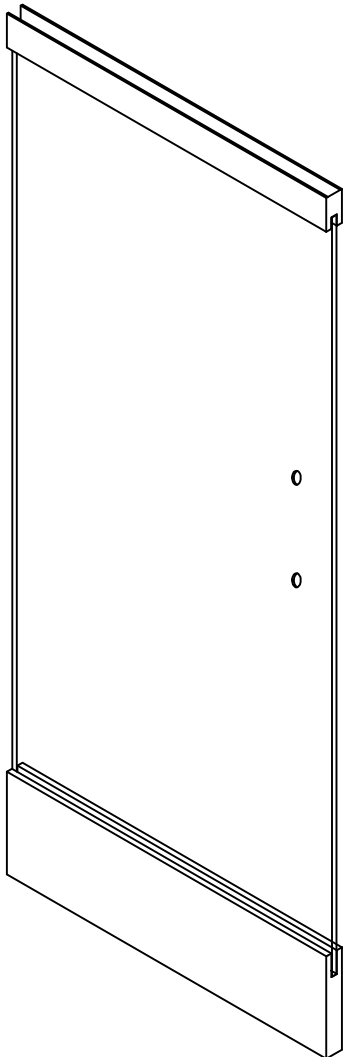


P-STYLE DOOR PL375 TOP PL1075 BOTTOM

PRL GLASS SYSTEMS INC.



* FINISHES AVAILABLE :
8 POLISHED & # 4 SATIN
STAINLESS
US3 POLISHED & US4 SATIN
BRASS (NON LACQUER COATED)
US10B
ANODIZED PAINTED

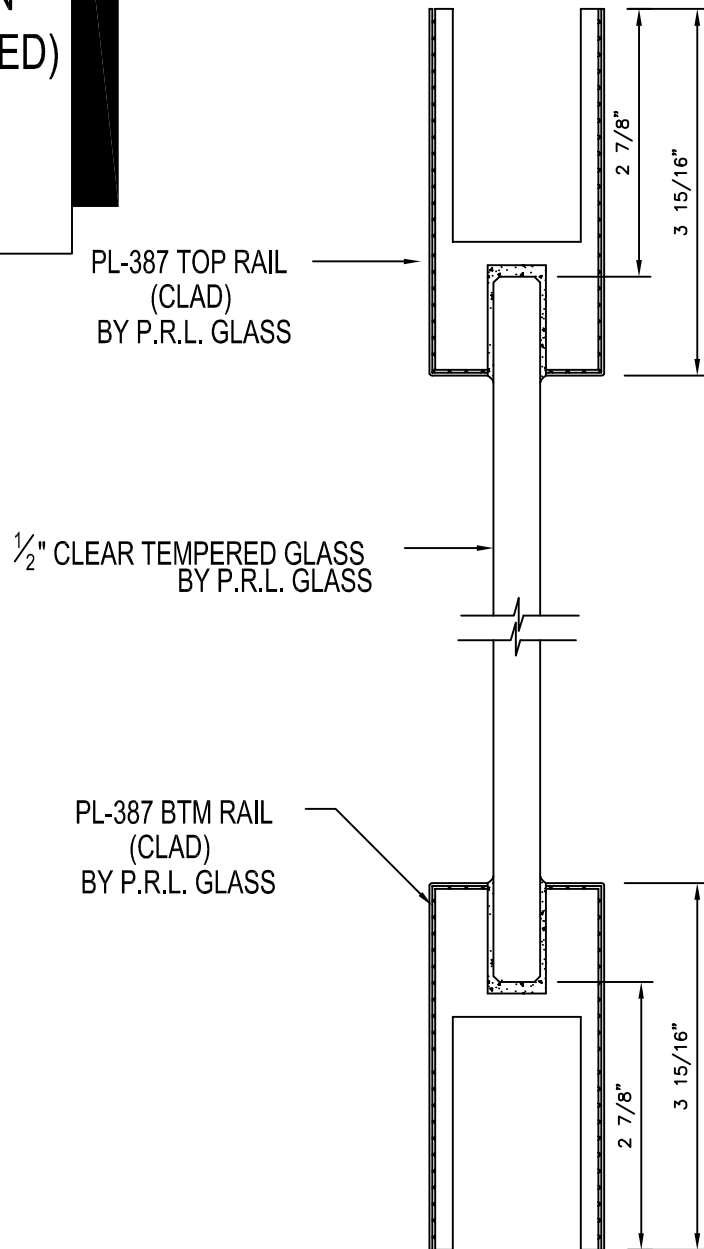
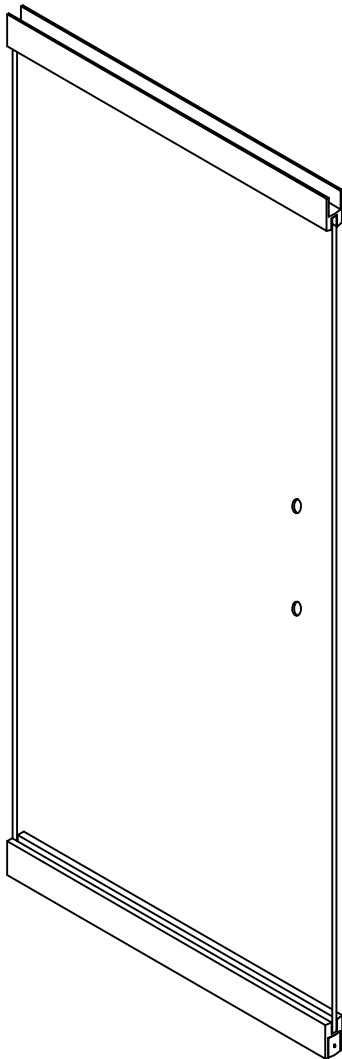


P-STYLE DOOR PL387 TOP & BTM.

PRL GLASS SYSTEMS
INC.



* FINISHES AVAILABLE :
8 POLISHED & # 4 SATIN
STAINLESS
US3 POLISHED & US4 SATIN
BRASS (NON LACQUER COATED)
US10B
ANODIZED PAINTED



P-STYLE DOOR

PL387 TOP

PL1000 BOTTOM

PRL GLASS SYSTEMS INC.



* FINISHES AVAILABLE :
8 POLISHED & # 4 SATIN
STAINLESS
US3 POLISHED & US4 SATIN
BRASS (NON LACQUER COATED)
US10B
ANODIZED PAINTED

